

# \$2,950,000 - 39428 Rge Rd 273, Rural Lacombe County

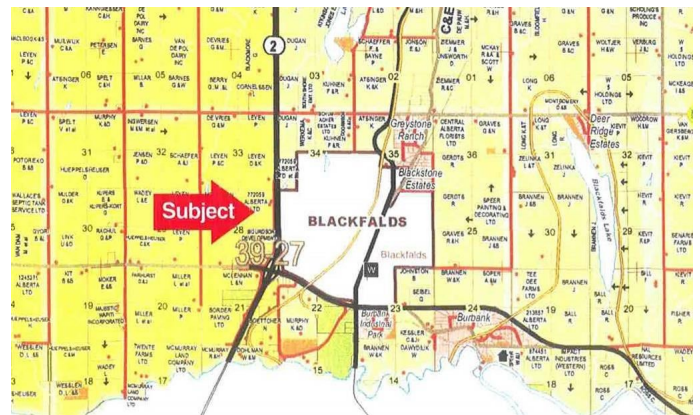
MLS® #A2021459

**\$2,950,000**

0 Bedroom, 0.00 Bathroom,  
Land on 99.02 Acres

Aspelund Industrial Park, Rural Lacombe  
County, Alberta

99 ACRES - of development land located adjacent to the Aspelund Industrial Park in the County of Lacombe near Blackfalds. Property will be serviced with municipal water & sewer under the Aspelund Industrial Park Water and Wastewater Bylaw No. 1354/21. Excellent exposure to Highway #2. Lots of potential for small users or larger single use buyer's.



## Essential Information

MLS® #	A2021459
Price	\$2,950,000
Bathrooms	0.00
Acres	99.02
Type	Land
Sub-Type	Industrial Land
Status	Active

## Community Information

Address	39428 Rge Rd 273
Subdivision	Aspelund Industrial Park
City	Rural Lacombe County
County	Lacombe County
Province	Alberta
Postal Code	T0M 0J0

## Additional Information

Date Listed	January 26th, 2023
-------------	--------------------

Days on Market 837

Zoning AG

## **Listing Details**

Listing Office RE/MAX real estate central alberta

Data is supplied by Pillar 9â„¢ MLS® System. Pillar 9â„¢ is the owner of the copyright in its MLS® System. Data is deemed reliable but is not guaranteed accurate by Pillar 9â„¢. The trademarks MLS®, Multiple Listing Service® and the associated logos are owned by The Canadian Real Estate Association (CREA) and identify the quality of services provided by real estate professionals who are members of CREA. Used under license.