

# \$514,900 - 237 Blackwolf Place N, Lethbridge

MLS® #A2160676

## \$514,900

3 Bedroom, 3.00 Bathroom, 1,676 sqft

Residential on 0.12 Acres

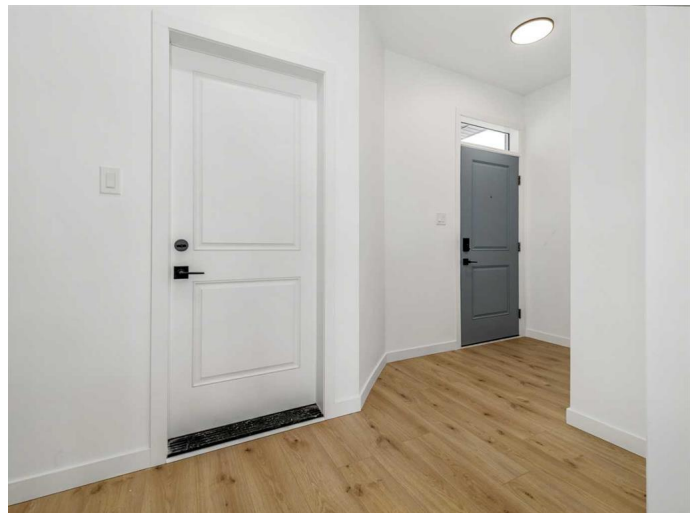
Blackwolf 2, Lethbridge, Alberta

The "Isla" by Avonlea Homes is the perfect family home. This particular model is built on a large pie-shaped lot. The main level hosts a notched out dining nook, eating bar on the kitchen island, walk in pantry. Large windows and tall ceilings make the main floor feel very bright and open. Also notice the new look of the flat painted ceilings. Upstairs resides the three bedrooms with the master including an en-suite and walk in closet. the ensuite has a large 5 foot walk-in shower and his/ hers sinks. Great Bonus room area for the family to enjoy. Bonus room is in the middle of the upstairs giving privacy to the master retreat from the kids bedrooms. Convenience of laundry is also upstairs. The basement is undeveloped but set up for family room, bedroom and another full bath. This home is located close to Park, Playground, shopping and schools. NHW. Home is virtually staged.

Built in 2023

## Essential Information

MLS® #	A2160676
Price	\$514,900
Bedrooms	3
Bathrooms	3.00
Full Baths	2
Half Baths	1
Square Footage	1,676
Acres	0.12



Year Built	2023
Type	Residential
Sub-Type	Detached
Style	2 Storey
Status	Active

### Community Information

Address	237 Blackwolf Place N
Subdivision	Blackwolf 2
City	Lethbridge
County	Lethbridge
Province	Alberta
Postal Code	T1H7J2

### Amenities

Parking Spaces	4
Parking	Double Garage Attached
# of Garages	2

### Interior

Interior Features	Kitchen Island, Walk-In Closet(s), Pantry
Appliances	Dishwasher, Refrigerator, Gas Range, Microwave, Range Hood
Heating	Forced Air
Cooling	None
Has Basement	Yes
Basement	Full, Unfinished

### Exterior

Exterior Features	None
Lot Description	Back Yard, Pie Shaped Lot
Roof	Asphalt Shingle
Construction	Concrete, Vinyl Siding, Wood Frame
Foundation	Poured Concrete

### Additional Information

Date Listed	August 27th, 2024
Days on Market	246
Zoning	RM

### Listing Details

Listing Office

RE/MAX REAL ESTATE - LETHBRIDGE

Data is supplied by Pillar 9â„¢ MLSÂ® System. Pillar 9â„¢ is the owner of the copyright in its MLSÂ® System. Data is deemed reliable but is not guaranteed accurate by Pillar 9â„¢. The trademarks MLSÂ®, Multiple Listing ServiceÂ® and the associated logos are owned by The Canadian Real Estate Association (CREA) and identify the quality of services provided by real estate professionals who are members of CREA. Used under license.