

# \$3,200,000 - 88091 Red Fox Lane W, Rural Foothills County

---

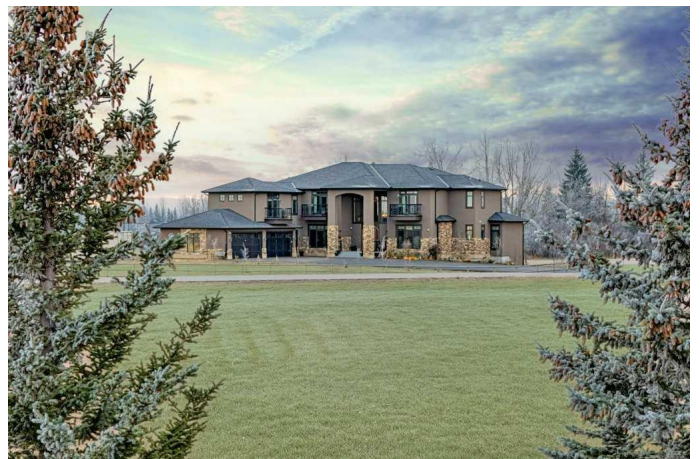
MLS® #A2179793

**\$3,200,000**

7 Bedroom, 8.00 Bathroom, 6,046 sqft  
Residential on 3.31 Acres

NONE, Rural Foothills County, Alberta

**SIGNIFICANT PRICE REDUCTION!** A truly luxurious, high quality and extremely spacious home ideal for a large family, multigenerational living and entertaining located on 3.3 acres approx. 8 minutes to Shawnessy area and close to the SW Ring Road connection. Over 9,000 sq. ft. of developed space including the lower-level walk out. 7 large bedrooms (4 with 4 pce. ensuites), 8 bathrooms total. Main floor has a grand entry, spacious formal dining room, formal living room and family room with tall waterfall feature, beautiful gourmet kitchen, additional separate prep kitchen and executive den with towering bookcases and ceiling height. The upper level has a dramatic catwalk joining both sides of this fabulous home with views down to the foyer area, 4 very spacious bedrooms with en-suites, lounge/TV viewing area with built inâ€™s and various spacious walk-in closets with custom shelving. Lower level has massive recreation room, oversized bar/food prep area, exercise room, 2 big bedrooms and large bathroom. Home includes 4 gas fireplaces, exceptional quality finishing with coffered ceilings and crown mouldings, triple glazed windows, stone covered internal feature columns, A/C, in-floor heating, 4 car attached garage, massive rear deck and private lower-level patio area, unique quality light fixtures and more. The upper bedrooms have Cinderella balconies! The home is located on a dead end cul-de-sac with several



other beautiful estate homes. It also has partial mountain views from some rooms. Location is very close to Red Deer Lake School, Spruce Meadows and quick access to 22X and Ring Road connector. Seldom do homes of this size, number of bedrooms and quality with such a "close in location" to Calgary become available in the Foothills MD.

Built in 2016

### Essential Information

MLS® #	A2179793
Price	\$3,200,000
Bedrooms	7
Bathrooms	8.00
Full Baths	6
Half Baths	2
Square Footage	6,046
Acres	3.31
Year Built	2016
Type	Residential
Sub-Type	Detached
Style	Acreage with Residence, 2 Storey
Status	Active

### Community Information

Address	88091 Red Fox Lane W
Subdivision	NONE
City	Rural Foothills County
County	Foothills County
Province	Alberta
Postal Code	T1S 3J6

### Amenities

Parking	Additional Parking, Asphalt, Heated Garage, Oversized, Paved, Quad or More Attached
# of Garages	4

### Interior

Interior Features	Bar, Bookcases, Built-in Features, Chandelier, Closet Organizers, Crown Molding, Central Vacuum, Kitchen Island, No Smoking Home, See Remarks, Recessed Lighting, Vaulted Ceiling(s), Walk-In Closet(s)
Appliances	Central Air Conditioner, Bar Fridge, Built-In Refrigerator, Built-In Gas Range, Oven-Built-In, Built-In Oven, Dryer, Garburator, Gas Range, Microwave, Refrigerator, Range Hood, Washer, Washer/Dryer, Window Coverings, Wine Refrigerator, Water Softener
Heating	Central, Forced Air, Fireplace(s), In Floor, Natural Gas
Cooling	Central Air
Fireplace	Yes
# of Fireplaces	4
Fireplaces	Family Room, Gas, Living Room, Master Bedroom, Recreation Room
Has Basement	Yes
Basement	Finished, Full, Walk-Out

## Exterior

Exterior Features	Balcony, Dog Run, BBQ gas line
Lot Description	Cul-De-Sac, Dog Run Fenced In, Lawn, Landscaped, Level, Rectangular Lot, Views
Roof	Asphalt
Construction	Brick, Stucco
Foundation	Poured Concrete

## Additional Information

Date Listed	November 22nd, 2024
Days on Market	254
Zoning	CR

## Listing Details

Listing Office	Royal LePage Solutions
----------------	------------------------

Data is supplied by Pillar 9â„¢ MLSÂ® System. Pillar 9â„¢ is the owner of the copyright in its MLSÂ® System. Data is deemed reliable but is not guaranteed accurate by Pillar 9â„¢. The trademarks MLSÂ®, Multiple Listing ServiceÂ® and the associated logos are owned by The Canadian Real Estate Association (CREA) and identify the quality of services provided by real estate professionals who are members of CREA. Used under license.