

\$577,000 - 320 Grassland Boulevard W, Lethbridge

MLS® #A2186499

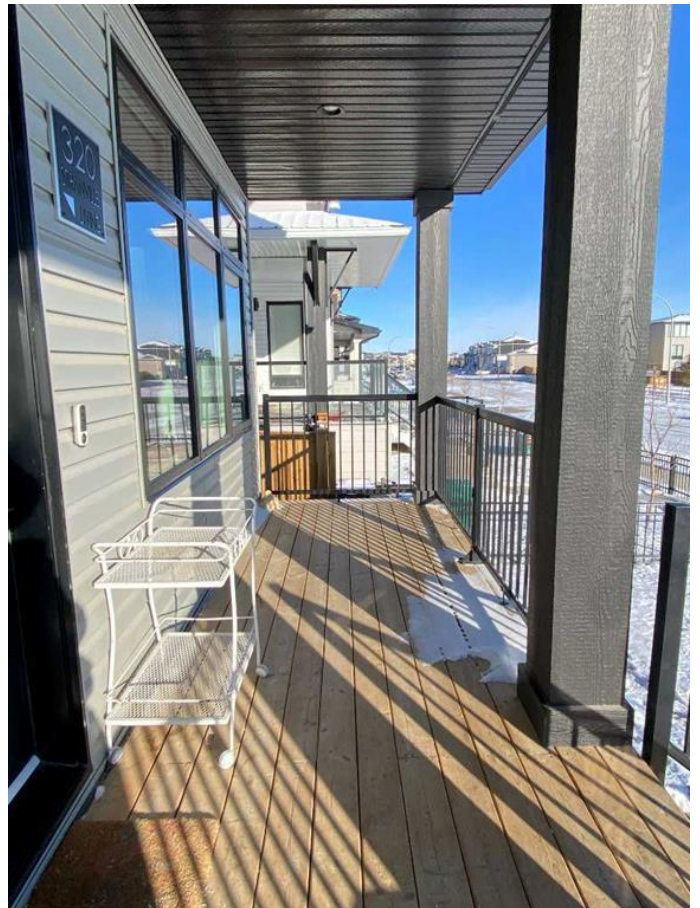
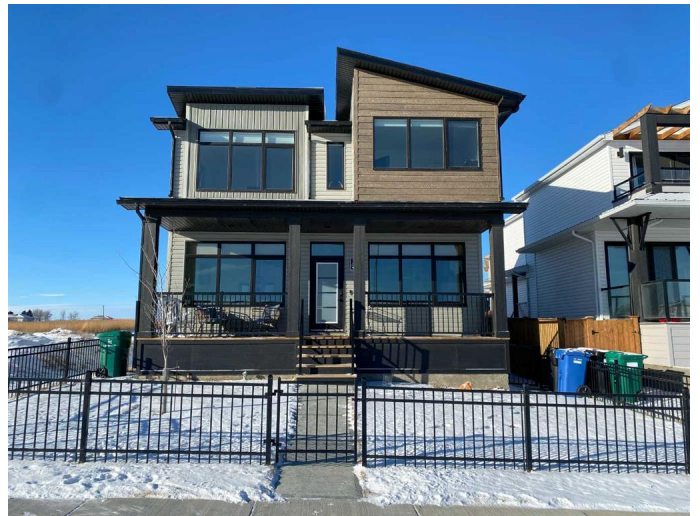
\$577,000

3 Bedroom, 3.00 Bathroom, 1,815 sqft

Residential on 0.10 Acres

Country Meadows Estates, Lethbridge, Alberta

Here is your opportunity to own a gorgeous 2-Storey home with loads of curb appeal. This 3 Bed/ 2.5 bath home is comprised of over 1800 square feet of thoughtfully designed luxury that overlooks the park and pond in the desirable Country Meadows community. This modern home is designed beautifully with a large open-concept lower floor with an office space, mudroom, half bath, and a front porch that is perfect for your morning coffee. Upstairs includes a large primary with a 4-piece ensuite, a large walk-in closet that connects to the laundry room, 2 other bedrooms, and another 4-piece bathroom. This move-in ready home has been lived in for less than 2 years and has had numerous upgrades since it was purchased. The upgrades include rear covered deck addition that provides a sheltered area for summer barbecues. Other upgrades include a fully fenced yard with handy rear gate for lane access, A/C, custom window coverings, and finished rear landscaping. The detached garage has been finished to provide a clean organized workspace for your next project. The space on the side of the garage has been utilized perfectly to allow for a trailer or other toys that can be stored safely within the confines of the fence. The unfinished basement awaits your personal touches. The Country Meadows community is located just minutes away from numerous amenities such as one of the largest YMCA's In Alberta, grocery stores, pubs, restaurants, parks, and schools. It is also only about 5 minutes from



Highway 3.

Built in 2022

Essential Information

| | |
|----------------|-------------|
| MLS® # | A2186499 |
| Price | \$577,000 |
| Bedrooms | 3 |
| Bathrooms | 3.00 |
| Full Baths | 2 |
| Half Baths | 1 |
| Square Footage | 1,815 |
| Acres | 0.10 |
| Year Built | 2022 |
| Type | Residential |
| Sub-Type | Detached |
| Style | 2 Storey |
| Status | Active |

Community Information

| | |
|-------------|---------------------------|
| Address | 320 Grassland Boulevard W |
| Subdivision | Country Meadows Estates |
| City | Lethbridge |
| County | Lethbridge |
| Province | Alberta |
| Postal Code | T1J5V1 |

Amenities

| | |
|----------------|--|
| Parking Spaces | 3 |
| Parking | Additional Parking, Double Garage Detached |
| # of Garages | 2 |

Interior

| | |
|-------------------|--|
| Interior Features | Built-in Features, Double Vanity, Open Floorplan, Quartz Counters, Walk-In Closet(s), Sump Pump(s) |
| Appliances | Dishwasher, Microwave, Range Hood, Washer/Dryer, Window Coverings, Built-In Refrigerator, Built-In Oven, Induction Cooktop |
| Heating | Natural Gas, Central |
| Cooling | Central Air |

| | |
|-----------------|-------------------------------|
| Fireplace | Yes |
| # of Fireplaces | 1 |
| Fireplaces | Electric, Living Room, Insert |
| Has Basement | Yes |
| Basement | Full, Unfinished |

Exterior

| | |
|-------------------|-----------------------------|
| Exterior Features | BBQ gas line, Private Yard |
| Lot Description | Back Lane, Back Yard, Front |
| Roof | Asphalt Shingle |
| Construction | Vinyl Siding, Wood Frame |
| Foundation | Poured Concrete |

Additional Information

| | |
|----------------|--------------------|
| Date Listed | January 20th, 2025 |
| Days on Market | 101 |
| Zoning | R-L |

Listing Details

| | |
|----------------|---|
| Listing Office | Royal Lepage South Country - Lethbridge |
|----------------|---|

Data is supplied by Pillar 9â„¢ MLSÂ® System. Pillar 9â„¢ is the owner of the copyright in its MLSÂ® System. Data is deemed reliable but is not guaranteed accurate by Pillar 9â„¢. The trademarks MLSÂ®, Multiple Listing ServiceÂ® and the associated logos are owned by The Canadian Real Estate Association (CREA) and identify the quality of services provided by real estate professionals who are members of CREA. Used under license.

