

# \$70,000 - 106, 15249 Twp Rd 665a Township, Lac La Biche County

---

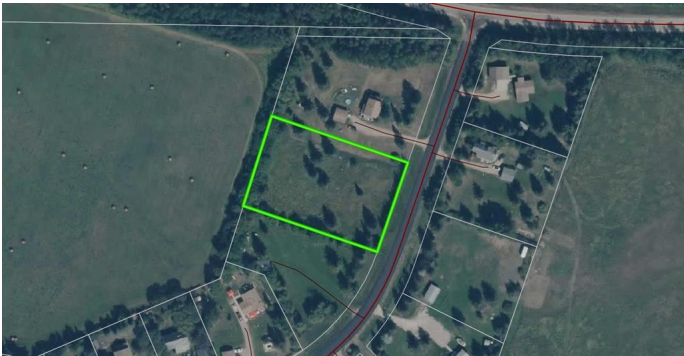
MLS® #A2186829

**\$70,000**

0 Bedroom, 0.00 Bathroom,  
Land on 1.35 Acres

Missawawi Lake Estate, Lac La Biche County,  
Alberta

This 1.35-acre parcel of vacant land is nestled in a peaceful, quiet setting just on the outskirts of Lac La Biche. Having a level structure and being located near multiple lakes, this property offers the perfect canvas to build your dream cabin or house. Surrounded by mature trees, including large spruce trees, this lot ensures privacy and a natural retreat-like ambiance. This lot also has power available providing easy access for future connections. Whether you envision a weekend getaway or a permanent residence, this property provides an opportunity to create an atmosphere you desire in a truly desirable location.



## Essential Information

MLS® #	A2186829
Price	\$70,000
Bathrooms	0.00
Acres	1.35
Type	Land
Sub-Type	Residential Land
Status	Active

## Community Information

Address	106, 15249 Twp Rd 665a Township
Subdivision	Missawawi Lake Estate
City	Lac La Biche County

County	Lac La Biche County
Province	Alberta
Postal Code	T0A2C2

### **Amenities**

Utilities	Natural Gas Available
-----------	-----------------------

### **Exterior**

Lot Description	Cleared, Few Trees, Level, Private
-----------------	------------------------------------

### **Additional Information**

Date Listed	January 10th, 2025
Days on Market	211
Zoning	COUNTRY RESIDENTIAL

### **Listing Details**

Listing Office	RE/MAX LA BICHE REALTY
----------------	------------------------

Data is supplied by Pillar 9â„¢ MLS® System. Pillar 9â„¢ is the owner of the copyright in its MLS® System. Data is deemed reliable but is not guaranteed accurate by Pillar 9â„¢. The trademarks MLS®, Multiple Listing Service® and the associated logos are owned by The Canadian Real Estate Association (CREA) and identify the quality of services provided by real estate professionals who are members of CREA. Used under license.