

\$750,000 - 24016 Aspen Drive, Rural Rocky View County

MLS® #A2190979

\$750,000

0 Bedroom, 0.00 Bathroom,
Land on 3.95 Acres

NONE, Rural Rocky View County, Alberta

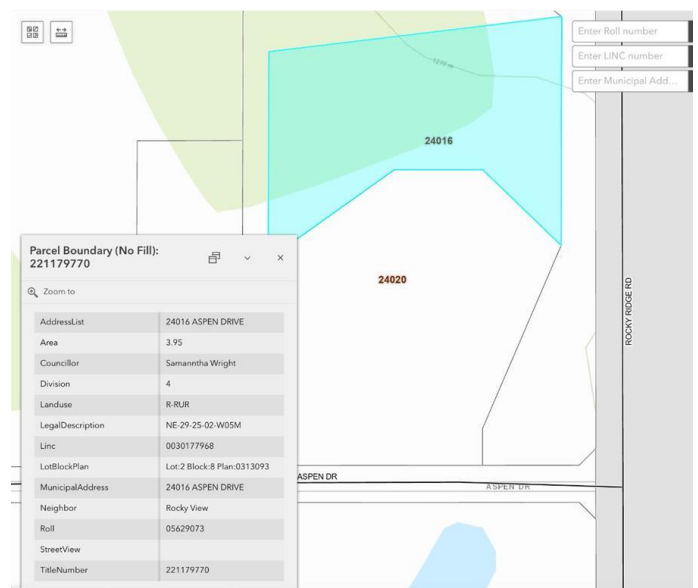
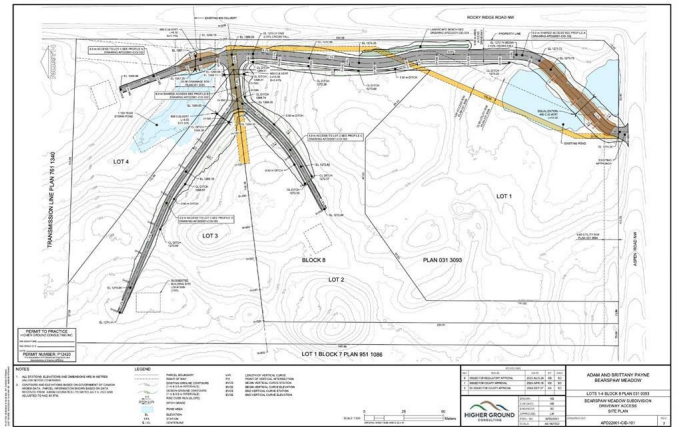
LOT 2 is the lot that is being offered for sale. Take advantage of one the very few 4 acre lots available in Bearspaw, just steps from the City Limits. This private lot is FULLY SERVICED, treed and is BEAUTIFUL. Easy access to everything. Shopping, YMCA, everything you'd need. No architectural controls in place. Build what you want, when you want. Don't wait too long, this opportunity will not last. The main road in will be paved once the construction has been completed on the homes. Call with any question!

Essential Information

MLS® #	A2190979
Price	\$750,000
Bathrooms	0.00
Acres	3.95
Type	Land
Sub-Type	Residential Land
Status	Active

Community Information

Address	24016 Aspen Drive
Subdivision	NONE
City	Rural Rocky View County
County	Rocky View County
Province	Alberta
Postal Code	T3R 1A5



Amenities

Utilities Electricity at Lot Line, Water At Lot Line, Natural Gas at Lot Line

Additional Information

Date Listed January 29th, 2025
Days on Market 93
Zoning R-RUR

Listing Details

Listing Office RE/MAX Real Estate (Central)

Data is supplied by Pillar 9â„¢ MLS® System. Pillar 9â„¢ is the owner of the copyright in its MLS® System. Data is deemed reliable but is not guaranteed accurate by Pillar 9â„¢. The trademarks MLS®, Multiple Listing Service® and the associated logos are owned by The Canadian Real Estate Association (CREA) and identify the quality of services provided by real estate professionals who are members of CREA. Used under license.