

\$79,999 - 3 Westlynn Drive, Claresholm

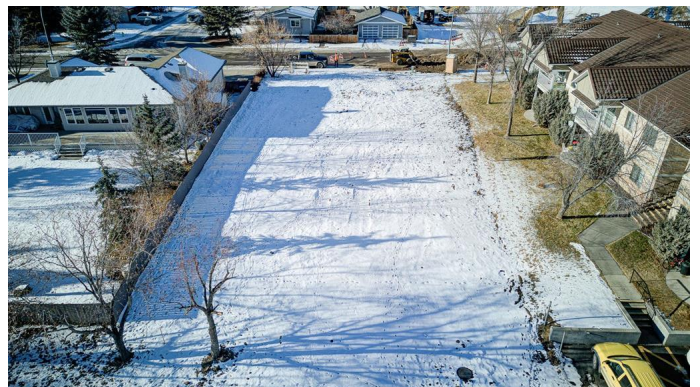
MLS® #A2194020

\$79,999

0 Bedroom, 0.00 Bathroom,
Land on 0.24 Acres

NONE, Claresholm, Alberta

Discover the epitome of tranquility and luxury living on the last remaining golf course lot! Nestled in the coveted community of Westlynn Drive, this oversized serviced with sanitary & water 72 x 140 foot lot gently sloping down to a scenic walking path and direct access to the prestigious Bridges Golf Course. A rare opportunity, situated in Claresholm, just 90 minutes from Calgary and 50 minutes from Lethbridge, this prime location offers a perfect blend of peaceful surroundings and convenient access to all amenities. With houses in the neighborhood fetching above \$400,000 this year, this is your chance to build your dream home in a thriving real estate market. Claresholm provides a vibrant community with schools, healthcare facilities, an indoor swimming pool, and a range of financial and auto services. Embrace the freedom to design your ideal home while adhering to building restrictions that focus on setbacks and structure size, ensuring a harmonious blend of elegance and functionality. Don't miss out on this unique opportunity to claim the last piece of golf course paradise on Westlynn Drive â€” your gateway to a lifestyle of comfort, prestige, and natural beauty."



Essential Information

MLS® #	A2194020
Price	\$79,999

Bathrooms	0.00
Acres	0.24
Type	Land
Sub-Type	Residential Land
Status	Active

Community Information

Address	3 Westlynn Drive
Subdivision	NONE
City	Claresholm
County	Willow Creek No. 26, M.D. of
Province	Alberta
Postal Code	T0L 0T0

Additional Information

Date Listed	February 11th, 2025
Days on Market	81
Zoning	R1

Listing Details

Listing Office	Century 21 Foothills Real Estate
----------------	----------------------------------

Data is supplied by Pillar 9â„¢ MLSÂ® System. Pillar 9â„¢ is the owner of the copyright in its MLSÂ® System. Data is deemed reliable but is not guaranteed accurate by Pillar 9â„¢. The trademarks MLSÂ®, Multiple Listing ServiceÂ® and the associated logos are owned by The Canadian Real Estate Association (CREA) and identify the quality of services provided by real estate professionals who are members of CREA. Used under license.