

\$799,900 - 65302 Highway 43, Rural Greenview No. 16, M.D. of

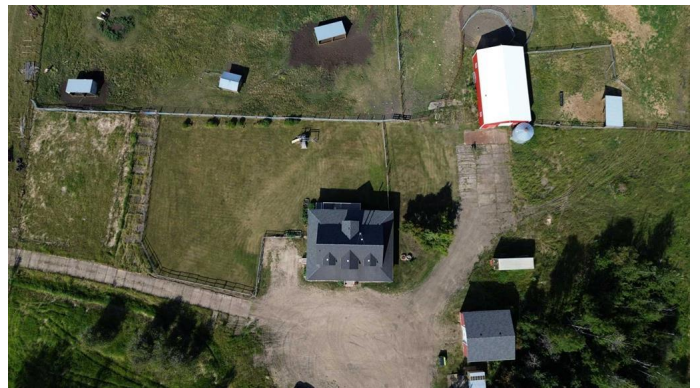
MLS® #A2197096

\$799,900

6 Bedroom, 3.00 Bathroom, 237 sqft
Residential on 19.52 Acres

NONE, Rural Greenview No. 16, M.D. of, Alberta

Welcome to this stunning 1.5-storey home, thoughtfully designed with six bedrooms and three and a half baths, offering plenty of space for comfortable living. Step inside to a warm and inviting living room, where a cozy wood-burning fireplace sets the perfect ambiance for relaxing evenings. The open floor plan seamlessly connects the modern kitchen, cozy dining area, and spacious living space, making it ideal for entertaining. The main floor primary suite provides a private retreat with an ensuite bath and generous closet space. Convenience is key with a main floor laundry room that's complete with a sink and a 2-piece bath, adding ease to daily living. Upstairs, youâ€™ll find two additional bedrooms and a full bath, offering privacy and comfort for family or guests. The basement has three additional bedrooms, a large family room, a full bath, and ample storage spaceâ€”perfect for a growing family or a versatile living setup. Outside, this property truly shines with its fully covered wrap-around deck, providing the perfect space to relax, enjoy your morning coffee, or entertain guests while taking in the scenic surroundings. For those who need extra workspace, there's a 32x32 shop, perfect for storage, projects, or a home-based business. Equestrian enthusiasts will love the 60x36 barn, thoughtfully set up for horses. Complete with stalls, a tack room, and



ample space for feed and equipment, this barn is designed to meet the needs of horse owners. With its functional layout, modern amenities, cozy fireplace, outstanding outbuildings, and wrap-around deck, this beautiful home offers the best of country living!

Built in 2007

Essential Information

MLS® #	A2197096
Price	\$799,900
Bedrooms	6
Bathrooms	3.00
Full Baths	2
Half Baths	1
Square Footage	237
Acres	19.52
Year Built	2007
Type	Residential
Sub-Type	Detached
Style	Acreage with Residence, 1 and Half Storey
Status	Active

Community Information

Address	65302 Highway 43
Subdivision	NONE
City	Rural Greenview No. 16, M.D. of
County	Greenview No. 16, M.D. of
Province	Alberta
Postal Code	T0H 3Z0

Amenities

Parking	Quad or More Detached
---------	-----------------------

Interior

Interior Features	Central Vacuum, High Ceilings, No Smoking Home, Recessed Lighting, Soaking Tub, Storage, Sump Pump(s), Beamed Ceilings, Ceiling Fan(s), Vinyl Windows, Master Downstairs
-------------------	--

Appliances	Dishwasher, Microwave Hood Fan, Refrigerator, Washer/Dryer, Oven
Heating	Forced Air
Cooling	None
Fireplace	Yes
# of Fireplaces	1
Fireplaces	Wood Burning
Has Basement	Yes
Basement	Full, Partially Finished

Exterior

Exterior Features	BBQ gas line, Lighting, Storage
Lot Description	Landscaped, Private, Brush, Cleared, Corners Marked, Desert Back, Farm, Lawn, Native Plants, Pasture, Rectangular Lot, Subdivided
Roof	Asphalt Shingle
Construction	Stone, Vinyl Siding
Foundation	Poured Concrete

Additional Information

Date Listed	February 25th, 2025
Days on Market	165
Zoning	Agriculture One

Listing Details

Listing Office	RE/MAX ADVANTAGE (WHITECOURT)
----------------	-------------------------------

Data is supplied by Pillar 9â„¢ MLS® System. Pillar 9â„¢ is the owner of the copyright in its MLS® System. Data is deemed reliable but is not guaranteed accurate by Pillar 9â„¢. The trademarks MLS®, Multiple Listing Service® and the associated logos are owned by The Canadian Real Estate Association (CREA) and identify the quality of services provided by real estate professionals who are members of CREA. Used under license.