

# \$337,500 - 290 Cougar Way N, Lethbridge

MLS® #A2210547

## \$337,500

3 Bedroom, 2.00 Bathroom, 854 sqft  
Residential on 0.07 Acres

Uplands, Lethbridge, Alberta

Super Clean One Owner Home is now ready for its next owner. This Custom built half duplex was upgraded with cabinets, tile work, lighting, pocket doors ,rear entry with deck and custom matching shed. Landscaped with front Chestnut tree and great backyard apple tree. There is Pecka Roll shutters to give you peace of mind when you are way! Call the REALTOR® of your choice today!

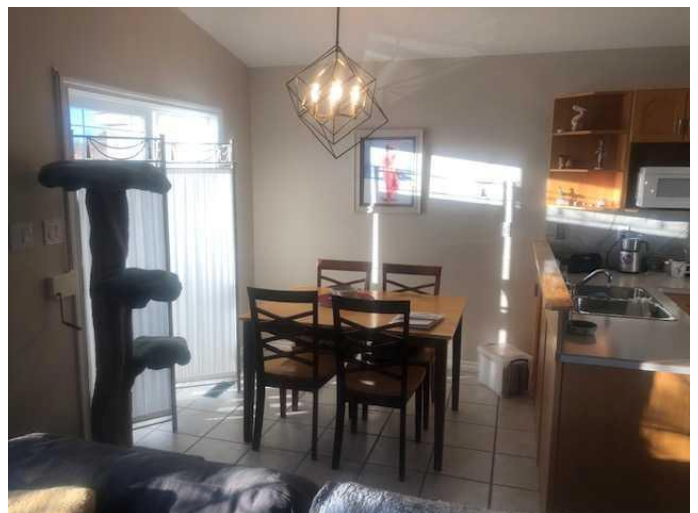
Built in 2001

### Essential Information

MLS® #	A2210547
Price	\$337,500
Bedrooms	3
Bathrooms	2.00
Full Baths	2
Square Footage	854
Acres	0.07
Year Built	2001
Type	Residential
Sub-Type	Semi Detached
Style	Side by Side, Bi-Level
Status	Active

### Community Information

Address	290 Cougar Way N
Subdivision	Uplands
City	Lethbridge



County	Lethbridge
Province	Alberta
Postal Code	T1H6R5

### **Amenities**

Parking Spaces	3
Parking	Parking Pad, Side By Side

### **Interior**

Interior Features	High Ceilings, Laminate Counters, No Smoking Home, See Remarks
Appliances	Dishwasher, Electric Stove, Refrigerator, Washer/Dryer
Heating	Forced Air, Natural Gas
Cooling	None
Has Basement	Yes
Basement	Finished, Full

### **Exterior**

Exterior Features	Balcony, Other, Private Yard
Lot Description	Back Lane, Landscaped, Few Trees
Roof	Asphalt Shingle
Construction	Stucco, Wood Frame
Foundation	Poured Concrete

### **Additional Information**

Date Listed	April 11th, 2025
Days on Market	23
Zoning	R/L

### **Listing Details**

Listing Office	SUTTON GROUP - LETHBRIDGE
----------------	---------------------------

Data is supplied by Pillar 9â„¢ MLS® System. Pillar 9â„¢ is the owner of the copyright in its MLS® System. Data is deemed reliable but is not guaranteed accurate by Pillar 9â„¢. The trademarks MLS®, Multiple Listing Service® and the associated logos are owned by The Canadian Real Estate Association (CREA) and identify the quality of services provided by real estate professionals who are members of CREA. Used under license.