

\$172,000 - 439 1 Street Se, Empress

MLS® #A2210985

\$172,000

6 Bedroom, 3.00 Bathroom, 1,050 sqft
Residential on 0.30 Acres

NONE, Empress, Alberta

If your family is growing or you simply need more space, this beautifully updated home is the perfect fit! With 6 bedrooms, there's plenty of room for kids, guests, home offices, or hobby spaces—whatever your family needs, this home can accommodate it.

Upstairs features a bright, spacious living room, while downstairs offers a large family room—ideal for movie nights, play areas, or a cozy retreat. Freshly updated with all new flooring and paint throughout, this home is move-in ready and full of warmth.

Sitting on 4 expansive lots, the outdoor space is a dream! There's ample room to garden, build a garage or shop, and still have space for kids to run and play.

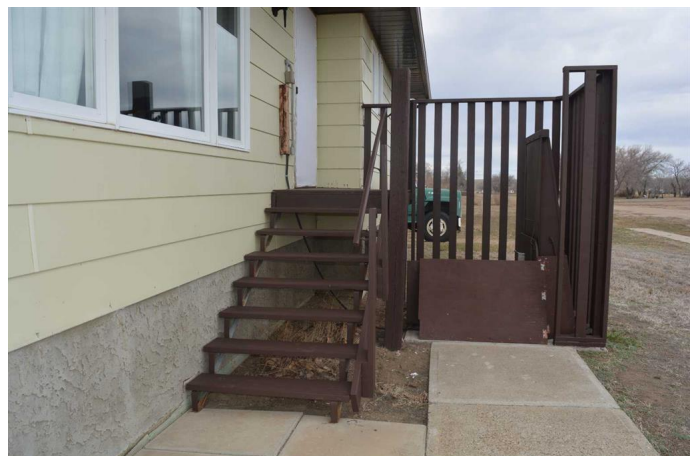
Whether you're settling in for the long haul or looking for a smart revenue property, this home offers incredible value and flexibility.

Don't miss your chance—call today to book a private tour!

Built in 1983

Essential Information

MLS® #	A2210985
Price	\$172,000
Bedrooms	6



Bathrooms	3.00
Full Baths	2
Half Baths	1
Square Footage	1,050
Acres	0.30
Year Built	1983
Type	Residential
Sub-Type	Detached
Style	Bi-Level
Status	Active

Community Information

Address	439 1 Street Se
Subdivision	NONE
City	Empress
County	Special Area 2
Province	Alberta
Postal Code	T0J 1E0

Amenities

Parking Spaces	3
Parking	Off Street, RV Access/Parking

Interior

Interior Features	Laminate Counters, Vinyl Windows
Appliances	Refrigerator, Stove(s), Washer/Dryer, Water Softener
Heating	Forced Air
Cooling	Central Air
Has Basement	Yes
Basement	Finished, Full

Exterior

Exterior Features	Other
Lot Description	Back Lane, Level, Square Shaped Lot
Roof	Asphalt
Construction	Wood Frame
Foundation	Wood

Additional Information

Date Listed April 11th, 2025

Days on Market 22

Zoning Res

Listing Details

Listing Office ROYAL LEPAGE COMMUNITY REALTY

Data is supplied by Pillar 9â,,ç MLSÂ® System. Pillar 9â,,ç is the owner of the copyright in its MLSÂ® System. Data is deemed reliable but is not guaranteed accurate by Pillar 9â,,ç. The trademarks MLSÂ®, Multiple Listing ServiceÂ® and the associated logos are owned by The Canadian Real Estate Association (CREA) and identify the quality of services provided by real estate professionals who are members of CREA. Used under license.