

# \$475,000 - 429 Maple Crescent, Picture Butte

MLS® #A2211598

**\$475,000**

5 Bedroom, 3.00 Bathroom, 1,436 sqft

Residential on 0.15 Acres

NONE, Picture Butte, Alberta

Welcome to 429 Maple Crescent! This home is a fully finished, one owner, 1436 sq ft raised bungalow home located in a very desirable neighborhood. Its been meticulously maintained and cared for, and is basically turn key move in ready! So many recent upgrades including flooring, counter tops, paint, A/C, hot water tank, appliances, and newer shingles. 5 total bedrooms, 3 bathrooms, main floor laundry, and a rear deck off the kitchen overlooking an open field. Easy to show, and quick possession is available!

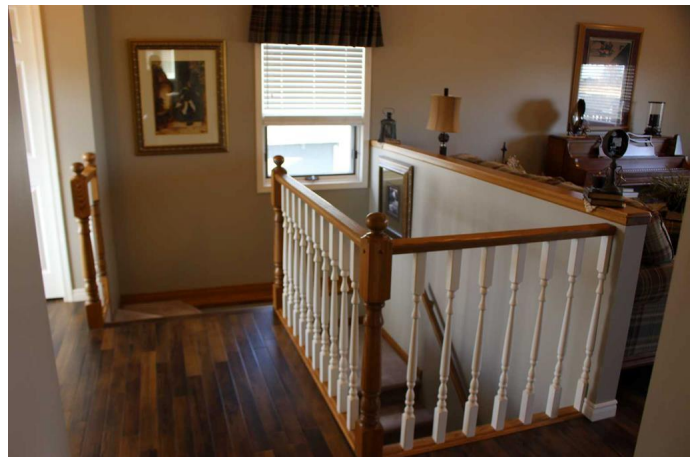
Built in 1995

## Essential Information

|                |             |
|----------------|-------------|
| MLS® #         | A2211598    |
| Price          | \$475,000   |
| Bedrooms       | 5           |
| Bathrooms      | 3.00        |
| Full Baths     | 3           |
| Square Footage | 1,436       |
| Acres          | 0.15        |
| Year Built     | 1995        |
| Type           | Residential |
| Sub-Type       | Detached    |
| Style          | Bungalow    |
| Status         | Active      |

## Community Information

Address 429 Maple Crescent



|             |                   |
|-------------|-------------------|
| Subdivision | NONE              |
| City        | Picture Butte     |
| County      | Lethbridge County |
| Province    | Alberta           |
| Postal Code | T0K 1V0           |

### Amenities

|                |                                  |
|----------------|----------------------------------|
| Parking Spaces | 4                                |
| Parking        | Double Garage Attached, Driveway |
| # of Garages   | 2                                |

### Interior

|                   |   |
|-------------------|---|
| Interior Features | Built-in Features, No Smoking Home, See Remarks, Walk-In Closet(s)  |
| Appliances        | Dishwasher, Garage Control(s), Microwave Hood Fan, Refrigerator, Stove(s), Washer/Dryer, Window Coverings |
| Heating           | Forced Air  |
| Cooling           | Central Air   |
| Fireplace         | Yes   |
| # of Fireplaces   | 1   |
| Fireplaces        | Gas   |
| Has Basement      | Yes   |
| Basement          | Finished, Full  |

### Exterior

|                   |   |
|-------------------|---|
| Exterior Features | Other, Private Yard, Storage                  |
| Lot Description   | Back Lane, Back Yard, Landscaped, See Remarks |
| Roof              | Asphalt Shingle                               |
| Construction      | Composite Siding, Stucco, Vinyl Siding        |
| Foundation        | Poured Concrete                               |

### Additional Information

|                |                  |
|----------------|------------------|
| Date Listed    | April 14th, 2025 |
| Days on Market | 21               |
| Zoning         | R1               |

### Listing Details

|                |   |
|----------------|---|
| Listing Office | RE/MAX REAL ESTATE - LETHBRIDGE (PICTURE BUTTE) |
|----------------|---|

Data is supplied by Pillar 9â„¢ MLSÂ® System. Pillar 9â„¢ is the owner of the copyright in its MLSÂ® System. Data is deemed reliable but is not guaranteed accurate by Pillar 9â„¢. The trademarks MLSÂ®, Multiple Listing ServiceÂ® and the associated logos are owned by The Canadian Real Estate Association (CREA) and identify the quality of services

provided by real estate professionals who are members of CREA. Used under license.