

\$1,495,000 - 14, 137 Wapiti Close, Canmore

MLS® #A2217403

\$1,495,000

4 Bedroom, 5.00 Bathroom, 1,990 sqft

Residential on 0.04 Acres

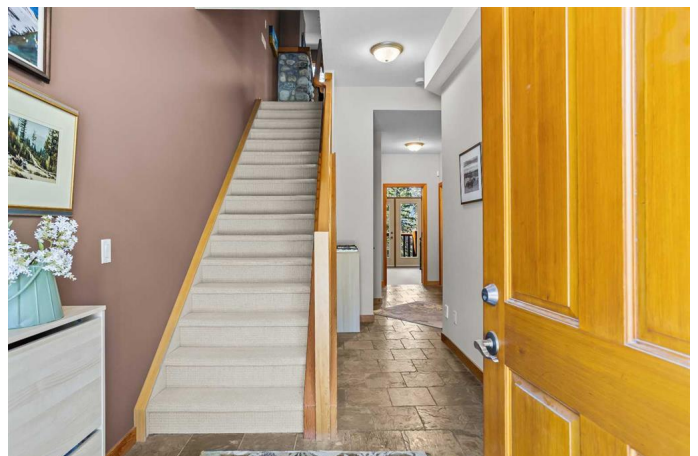
Eagle Terrace, Canmore, Alberta

Step into elevated mountain living with this stunning 2,737 sq ft townhome, perfectly perched to capture sweeping mountain vistas and all-day sunshine. This immaculately designed home offers 3 spacious bedrooms plus a versatile 4th (ideal as a guest suite or family room), along with 4.5 beautifully appointed bathrooms. The open-concept main level seamlessly connects a chef-inspired kitchen, an elegant dining space, and a sunken living room anchored by a striking Riverstone gas fireplace. Step out onto the sun-drenched south-facing deck and soak in the mountain views. Upstairs, soaring vaulted ceilings and oversized windows flood the two primary bedrooms with natural light. On the entry level, youâ€™ll find a welcoming guest suite with full bath, a dedicated laundry room, and an oversized garage with ample storage for all your mountain gear. The walkout lower level offers even more space to unwind, with a full bath, rec room or flexible 4th bedroom that opens to a patio.

Built in 2003

Essential Information

MLS® #	A2217403
Price	\$1,495,000
Bedrooms	4
Bathrooms	5.00
Full Baths	4



Half Baths	1
Square Footage	1,990
Acres	0.04
Year Built	2003
Type	Residential
Sub-Type	Row/Townhouse
Style	3 Storey
Status	Active

Community Information

Address	14, 137 Wapiti Close
Subdivision	Eagle Terrace
City	Canmore
County	Bighorn No. 8, M.D. of
Province	Alberta
Postal Code	T1W 3B2

Amenities

Amenities	Parking
Parking Spaces	2
Parking	Single Garage Attached
# of Garages	1

Interior

Interior Features	Ceiling Fan(s), Kitchen Island, Open Floorplan, See Remarks, Vaulted Ceiling(s), Walk-In Closet(s)
Appliances	Dishwasher, Dryer, Garage Control(s), Washer, Window Coverings, Electric Range
Heating	Forced Air, Natural Gas
Cooling	None
Fireplace	Yes
# of Fireplaces	1
Fireplaces	Gas
Has Basement	Yes
Basement	Finished, Full, Walk-Out

Exterior

Exterior Features	Balcony, Lighting
Lot Description	Cul-De-Sac, Street Lighting, Low Maintenance Landscape

Roof	Asphalt Shingle
Construction	Shingle Siding
Foundation	Poured Concrete

Additional Information

Date Listed	May 2nd, 2025
Days on Market	99
Zoning	Res Multi

Listing Details

Listing Office	RE/MAX Alpine Realty
----------------	----------------------

Data is supplied by Pillar 9â„¢ MLS® System. Pillar 9â„¢ is the owner of the copyright in its MLS® System. Data is deemed reliable but is not guaranteed accurate by Pillar 9â„¢. The trademarks MLS®, Multiple Listing Service® and the associated logos are owned by The Canadian Real Estate Association (CREA) and identify the quality of services provided by real estate professionals who are members of CREA. Used under license.