

\$699,000 - 2212 28 Avenue, Coaldale

MLS® #A2220019

\$699,000

5 Bedroom, 3.00 Bathroom, 1,918 sqft

Residential on 0.22 Acres

NONE, Coaldale, Alberta

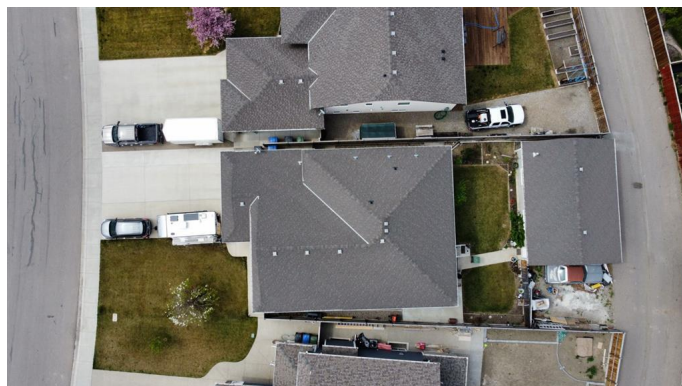
An opportunity like this doesn't come along everyday! Nestled on a quiet street in a beautiful community right beside Land-O-Lakes Golf and Country Club, this property has it all! Large bi-level home with over 3600 sqft of living space. High end finishes and a beautiful open floorpan. Not only does the front have a large double attached garage, but the back features a very large 3-4 car garage off a paved alley. This home has all the space a growing family, hobbyist or business owner could want. Talk to your favourite REALTOR® today for all the details!

Built in 2011

Essential Information

| | |
|----------------|-------------|
| MLS® # | A2220019 |
| Price | \$699,000 |
| Bedrooms | 5 |
| Bathrooms | 3.00 |
| Full Baths | 3 |
| Square Footage | 1,918 |
| Acres | 0.22 |
| Year Built | 2011 |
| Type | Residential |
| Sub-Type | Detached |
| Style | Bi-Level |
| Status | Active |

Community Information



| | |
|-------------|-------------------|
| Address | 2212 28 Avenue |
| Subdivision | NONE |
| City | Coaldale |
| County | Lethbridge County |
| Province | Alberta |
| Postal Code | T1M0A6 |

Amenities

| | |
|----------------|---|
| Parking Spaces | 10 |
| Parking | Double Garage Attached, Off Street, RV Access/Parking, Triple Garage Detached |
| # of Garages | 5 |

Interior

| | |
|-------------------|--|
| Interior Features | See Remarks |
| Appliances | See Remarks |
| Heating | Forced Air, Natural Gas |
| Cooling | Central Air |
| Fireplace | Yes |
| # of Fireplaces | 1 |
| Fireplaces | Gas |
| Has Basement | Yes |
| Basement | Exterior Entry, Finished, Full, Walk-Up To Grade |

Exterior

| | |
|-------------------|--|
| Exterior Features | Other, Private Yard |
| Lot Description | Back Lane, Back Yard, City Lot, Front Yard, Landscaped, Lawn, Underground Sprinklers |
| Roof | Asphalt Shingle |
| Construction | Cement Fiber Board |
| Foundation | Poured Concrete |

Additional Information

| | |
|----------------|----------------|
| Date Listed | May 10th, 2025 |
| Days on Market | 5 |
| Zoning | R-L |

Listing Details

| | |
|----------------|----------------------------|
| Listing Office | Lethbridge Real Estate.com |
|----------------|----------------------------|

Data is supplied by Pillar 9â„¢ MLS® System. Pillar 9â„¢ is the owner of the copyright in its MLS® System. Data is deemed reliable but is not guaranteed accurate by Pillar 9â„¢. The trademarks MLS®, Multiple Listing Service® and the associated logos are owned by The Canadian Real Estate Association (CREA) and identify the quality of services provided by real estate professionals who are members of CREA. Used under license.