

\$779,900 - 151 Belvedere Crescent Se, Calgary

MLS® #A2224135

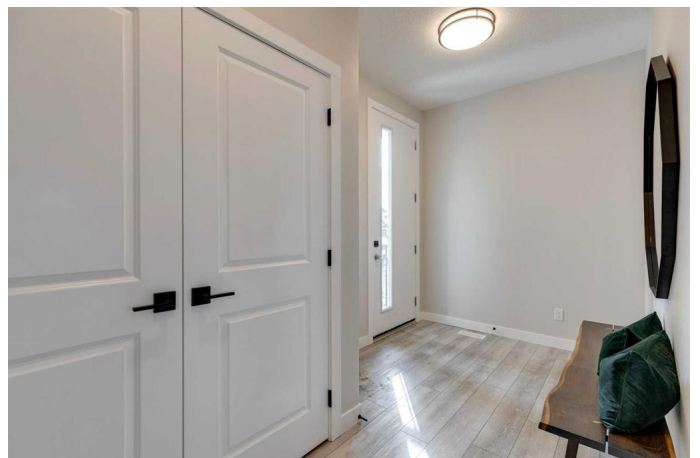
\$779,900

3 Bedroom, 3.00 Bathroom, 1,936 sqft

Residential on 0.08 Acres

Belvedere., Calgary, Alberta

4 BEDROOMS - 3 upstairs and 1 on the main floor - DOUBLE ATTACHED GARAGE- SEPARATE BASEMENT ENTRANCE - 2 STOREY HOME BACKING ONTO GREENSPACE. Welcome to the master built neighbourhood of Belvedere with miles of walking paths, parks, new elementary school to be built, immediate proximity to East Hills commercial centre and quick and easy access to downtown Calgary with the Rapid transit system. Crystal Creek Homes has many different homes to choose from ranging in size from 1250 sq ft to 3000+ sq ft. homes. Visit the show home at 272 Belvedere Drive to see all of the different styles and designs of homes. This stunning new build by Crystal Creek Homes, the Carson model, which offers the perfect blend of modern style and thoughtful practicality. This home features a double front-attached garage and a beautifully landscaped front yard with a tree and up to three shrubs, enhancing its curb appeal. Inside, you'll find soaring high ceilings and an open-concept floor plan that allows for effortless flow and an abundance of natural light. The spacious living area is highlighted by a cozy fireplace, providing warmth and comfort. The chef's kitchen is a true centrepiece, complete with a large kitchen island, a pantry for added storage, and high-end finishes throughout. The mudroom offers a convenient transition from the garage. Step outside to the pressure-treated deck, perfect for outdoor entertaining or relaxing



while enjoying the east-facing views of the backyard. Don't miss the opportunity to make this brand-new home yours! This home is currently under construction and will be complete in the summer 2025. These photos were taken from an exact Carson home design built in another neighbourhood. Please visit the show home at 272 Belvedere Drive to view similar built home and get permission for site visit of this address. Monday - Thursday 2-8 pm and Saturday - Sunday 12- 5 pm.

Built in 2025

Essential Information

MLS® #	A2224135
Price	\$779,900
Bedrooms	3
Bathrooms	3.00
Full Baths	2
Half Baths	1
Square Footage	1,936
Acres	0.08
Year Built	2025
Type	Residential
Sub-Type	Detached
Style	2 Storey
Status	Active

Community Information

Address	151 Belvedere Crescent Se
Subdivision	Belvedere.
City	Calgary
County	Calgary
Province	Alberta
Postal Code	T2A 7M5

Amenities

Parking Spaces	4
Parking	Double Garage Attached

of Garages 2

Interior

Interior Features Closet Organizers, Double Vanity, Kitchen Island, Open Floorplan, Pantry, Walk-In Closet(s)

Appliances Dishwasher, Dryer, Garage Control(s), Refrigerator, Stove(s), Washer

Heating Forced Air, Natural Gas

Cooling None

Fireplace Yes

of Fireplaces 1

Fireplaces Gas

Has Basement Yes

Basement Full, Unfinished

Exterior

Exterior Features None

Lot Description Landscaped

Roof Asphalt Shingle

Construction Composite Siding, Wood Frame

Foundation Poured Concrete

Additional Information

Date Listed May 23rd, 2025

Days on Market 22

Zoning TBD

Listing Details

Listing Office eXp Realty

Data is supplied by Pillar 9â„¢ MLS® System. Pillar 9â„¢ is the owner of the copyright in its MLS® System. Data is deemed reliable but is not guaranteed accurate by Pillar 9â„¢. The trademarks MLS®, Multiple Listing Service® and the associated logos are owned by The Canadian Real Estate Association (CREA) and identify the quality of services provided by real estate professionals who are members of CREA. Used under license.