

# \$234,900 - 1801 135 Street, Blairmore

MLS® #A2224308

## \$234,900

3 Bedroom, 2.00 Bathroom, 1,224 sqft

Residential on 0.11 Acres

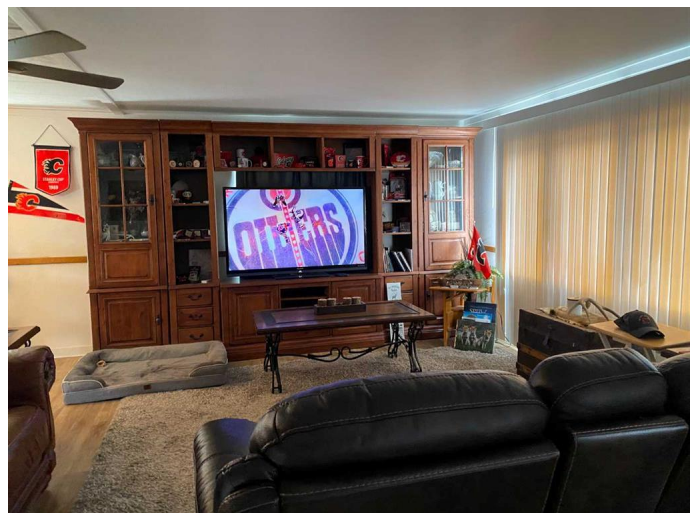
NONE, Blairmore, Alberta

Spacious older 3-bedroom manufactured home in a fantastic Blairmore location with great mountain views, Crowsnest Pass is fast becoming a much sought after destination for mountain enthusiasts of all stripes. Whether motorized or non-motorized, the area offers hundreds of kilometers of mountain trails. Hiking, biking, golfing or fishing, to name just few of the activities one can enjoy. Great health facilities. Close to Calgary, Lethbridge and all points in the Elk Valley. High demand for rental accommodations is also attracting real estate investors.

Built in 1976

## Essential Information

MLS® #	A2224308
Price	\$234,900
Bedrooms	3
Bathrooms	2.00
Full Baths	1
Half Baths	1
Square Footage	1,224
Acres	0.11
Year Built	1976
Type	Residential
Sub-Type	Detached
Style	Bungalow
Status	Active



## Community Information

Address	1801 135 Street
Subdivision	NONE
City	Blairmore
County	Crowsnest Pass
Province	Alberta
Postal Code	T0K 0E0

## Amenities

Parking Spaces	2
Parking	Parking Pad, RV Access/Parking

## Interior

Interior Features	See Remarks
Appliances	Electric Stove, Refrigerator, Washer/Dryer
Heating	Forced Air
Cooling	None
Basement	None

## Exterior

Exterior Features	Storage
Lot Description	City Lot
Roof	Flat Torch Membrane
Construction	Mixed
Foundation	Combination

## Additional Information

Date Listed	May 22nd, 2025
Days on Market	28
Zoning	Residential

## Listing Details

Listing Office	ROYAL LEPAGE SOUTH COUNTRY - Crowsnest Pass
----------------	---

Data is supplied by Pillar 9â„¢ MLS® System. Pillar 9â„¢ is the owner of the copyright in its MLS® System. Data is deemed reliable but is not guaranteed accurate by Pillar 9â„¢. The trademarks MLS®, Multiple Listing Service® and the associated logos are owned by The Canadian Real Estate Association (CREA) and identify the quality of services provided by real estate professionals who are members of CREA. Used under license.