

\$269,000 - 110 Clarke Street, Acme

MLS® #A2224574

\$269,000

0 Bedroom, 0.00 Bathroom,
Commercial on 0.33 Acres

NONE, Acme, Alberta

So many opportunities! Small town business location with residential possibilities. This 1600 sf steel building with new insulated OH door, new radiant tube heater, new 3 pc bathroom, mezzanine for storage and other improvements is located on 5-25x115 lots! Yard is graveled with abundance of room for equipment or new build. Come and have a look at this great opportunity!

Built in 1979

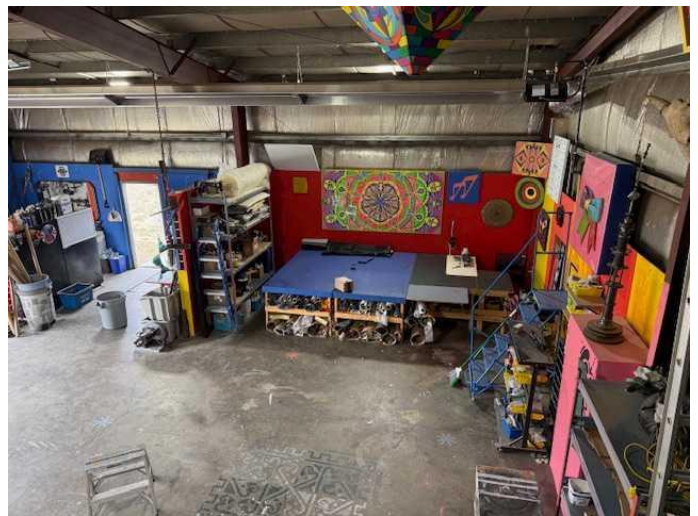
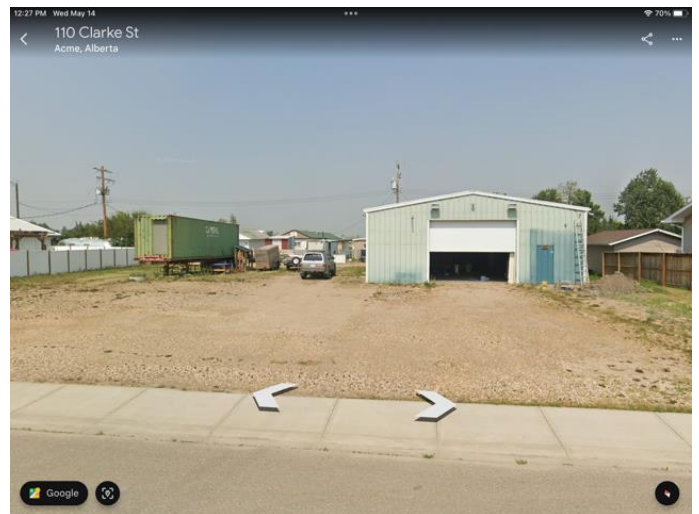
Essential Information

| | |
|------------|------------|
| MLS® # | A2224574 |
| Price | \$269,000 |
| Bathrooms | 0.00 |
| Acres | 0.33 |
| Year Built | 1979 |
| Type | Commercial |
| Sub-Type | Business |
| Status | Active |

Community Information

| | |
|-------------|-------------------|
| Address | 110 Clarke Street |
| Subdivision | NONE |
| City | Acme |
| County | Kneehill County |
| Province | Alberta |
| Postal Code | T0M 0A0 |

Amenities



| | |
|----------------|----|
| Parking Spaces | 10 |
|----------------|----|

Interior

| | |
|---------|--|
| Heating | Overhead Heater(s), Natural Gas, Radiant |
| Cooling | None |

Exterior

| | |
|--------------|---------------------------|
| Roof | Metal |
| Construction | Metal Frame, Metal Siding |
| Foundation | Poured Concrete, Slab |

Additional Information

| | |
|----------------|----------------|
| Date Listed | May 26th, 2025 |
| Days on Market | 85 |
| Zoning | CB |

Listing Details

| | |
|----------------|------------|
| Listing Office | CIR Realty |
|----------------|------------|

Data is supplied by Pillar 9â„¢ MLS® System. Pillar 9â„¢ is the owner of the copyright in its MLS® System. Data is deemed reliable but is not guaranteed accurate by Pillar 9â„¢. The trademarks MLS®, Multiple Listing Service® and the associated logos are owned by The Canadian Real Estate Association (CREA) and identify the quality of services provided by real estate professionals who are members of CREA. Used under license.