

# \$18,000 - 4739 47 Th Street, Clyde

MLS® #A2225461

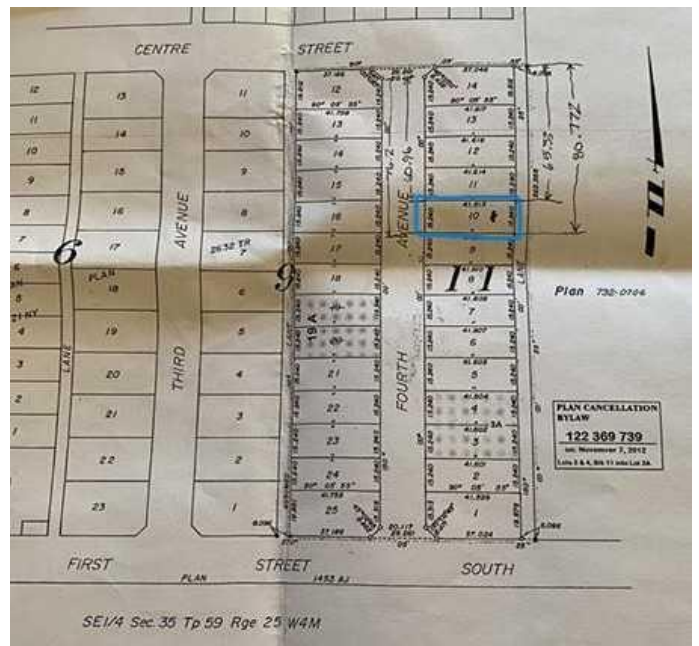
**\$18,000**

0 Bedroom, 0.00 Bathroom,  
Land on 0.16 Acres

Clyde, Clyde, Alberta

Donâ€™t miss this opportunity! LET YOUR DREAMS BEGIN... Welcome to 4739 47th Street!

Prime Residential Lot at an affordable price. Located in a charming small town of Clyde with peaceful surroundings and a strong sense of community. Just 30 minutes away from St. Albert city amenities or 10 Minutes from Westlockâ€™ shopping, dining, schools, and healthcare. Rectangle Lot 136x50 approx..



## Essential Information

|           |                  |
|-----------|------------------|
| MLS® #    | A2225461         |
| Price     | \$18,000         |
| Bathrooms | 0.00             |
| Acres     | 0.16             |
| Type      | Land             |
| Sub-Type  | Residential Land |
| Status    | Active           |

## Community Information

|             |                   |
|-------------|-------------------|
| Address     | 4739 47 Th Street |
| Subdivision | Clyde             |
| City        | Clyde             |
| County      | Westlock County   |
| Province    | Alberta           |
| Postal Code | T0G 0P0           |

## Additional Information

|             |                |
|-------------|----------------|
| Date Listed | May 29th, 2025 |
|-------------|----------------|

|                |     |
|----------------|-----|
| Days on Market | 77  |
| Zoning         | res |

**Listing Details**

|                |                |
|----------------|----------------|
| Listing Office | RE/MAX Connect |
|----------------|----------------|

Data is supplied by Pillar 9â„¢ MLS® System. Pillar 9â„¢ is the owner of the copyright in its MLS® System. Data is deemed reliable but is not guaranteed accurate by Pillar 9â„¢. The trademarks MLS®, Multiple Listing Service® and the associated logos are owned by The Canadian Real Estate Association (CREA) and identify the quality of services provided by real estate professionals who are members of CREA. Used under license.