

\$175,000 - 216 Grenfell Crescent, Fort McMurray

MLS® #A2231146

\$175,000

3 Bedroom, 1.00 Bathroom, 1,145 sqft
Residential on 0.10 Acres

Gregoire Park, Fort McMurray, Alberta

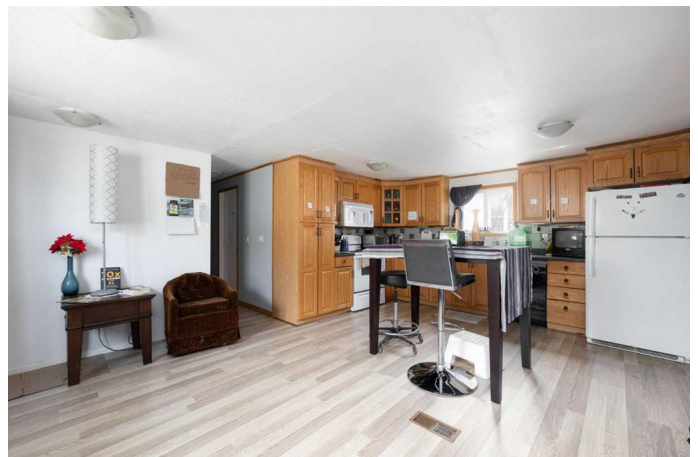
Welcome to 216 Grenfell Crescent – Where Comfort Meets Style!

Step into modern living at its finest in this beautifully updated 3-bedroom mobile home, perfectly situated on a generous 4,542 sq. ft. lot. Offering the perfect blend of comfort, space, and functionality, this home has been meticulously cared for and radiates timeless charm with a fresh, rejuvenated ambiance.

Be greeted by a grand front veranda, setting the stage for warm welcomes and morning coffees. Inside, a spacious mudroom provides excellent storage and organization—an ideal entry point for busy households. The primary bedroom is your private retreat, featuring a large walk-in closet and a spa-like ensuite with a corner jetted tub for ultimate relaxation. Two additional bedrooms offer flexibility for a growing family, home office, or guest accommodations.

The heart of the home shines in the open-concept kitchen and living area, seamlessly connected by elegant French doors. The bright, functional kitchen is perfect for culinary adventures and entertaining, while the adjacent dining space completes the welcoming flow for both everyday meals and festive gatherings.

Step outside and enjoy your private outdoor oasis, complete with a 12x20 wired and



insulated shop with overhead storageâ€”ideal for hobbies, projects, or extra storage. The brick patio offers a beautiful space for BBQs, outdoor dining, or simply soaking up the sun.

With plenty of yard space, this home offers the feel of a single-family property in an affordable package.

Don't miss out on this exceptional opportunityâ€”call today to schedule your private showing and make this hidden gem your own!

Built in 1970

Essential Information

| | |
|----------------|-------------------------|
| MLS® # | A2231146 |
| Price | \$175,000 |
| Bedrooms | 3 |
| Bathrooms | 1.00 |
| Full Baths | 1 |
| Square Footage | 1,145 |
| Acres | 0.10 |
| Year Built | 1970 |
| Type | Residential |
| Sub-Type | Detached |
| Style | Single Wide Mobile Home |
| Status | Active |

Community Information

| | |
|-------------|-----------------------|
| Address | 216 Grenfell Crescent |
| Subdivision | Gregoire Park |
| City | Fort McMurray |
| County | Wood Buffalo |
| Province | Alberta |
| Postal Code | T9H 2M6 |

Amenities

| | |
|----------------|--------------------------------------------------------|
| Amenities | Parking |
| Parking Spaces | 4 |
| Parking | Parking Pad, RV Access/Parking, Single Garage Detached |
| # of Garages | 1 |

Interior

| | |
|-------------------|-------------------------------|
| Interior Features | Jetted Tub, Laminate Counters |
| Appliances | Other, See Remarks |
| Heating | Forced Air |
| Cooling | None |
| Basement | None |

Exterior

| | |
|-------------------|--------------------------|
| Exterior Features | Barbecue |
| Lot Description | Back Yard |
| Roof | Asphalt Shingle |
| Construction | Vinyl Siding, Wood Frame |
| Foundation | Pillar/Post/Pier |

Additional Information

| | |
|----------------|-----------------|
| Date Listed | June 13th, 2025 |
| Days on Market | 53 |
| Zoning | RMH-2 |

Listing Details

| | |
|----------------|----------------|
| Listing Office | RE/MAX Connect |
|----------------|----------------|

Data is supplied by Pillar 9â„¢ MLS® System. Pillar 9â„¢ is the owner of the copyright in its MLS® System. Data is deemed reliable but is not guaranteed accurate by Pillar 9â„¢. The trademarks MLS®, Multiple Listing Service® and the associated logos are owned by The Canadian Real Estate Association (CREA) and identify the quality of services provided by real estate professionals who are members of CREA. Used under license.