

\$69,900 - Lot 2 Starlight Place, Turtle Lake

MLS® #A2234991

\$69,900

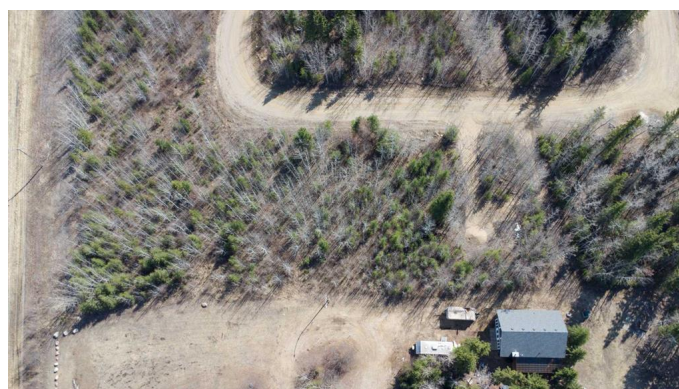
0 Bedroom, 0.00 Bathroom,
Land on 0.19 Acres

NONE, Turtle Lake, Saskatchewan

Located in the scenic Resort Village of Kivimaaâ€“Moonlight Bay on the shores of Turtle Lake, SK, this 0.19-acre developed lot in the Starlight Place cul-de-sac offers natural gas and underground power at the property boundary. The original developerâ€“a family ownership groupâ€“has elected to sell these parcels as part of their estate planning process. According to village administration, the community features approximately 240 cabins, two boat launches, a fire station, a public playground, and a pickleball court currently under construction. Residents are drawn to the areaâ€™s natural beauty and the year-round recreation offered by the lake and nearby Meadow Lake Provincial Forest. A wholesale purchase consideration is being offered for those who would like the option of acquiring multiple lots for a family compound, or for investors looking to grow their portfolio. GST applies. Please contact the listing office to request a detailed information package.

Essential Information

MLS® #	A2234991
Price	\$69,900
Bathrooms	0.00
Acres	0.19
Type	Land
Sub-Type	Recreational
Status	Active



Community Information

Address	Lot 2 Starlight Place
Subdivision	NONE
City	Turtle Lake
County	Saskatchewan
Province	Saskatchewan
Postal Code	S9X 1E6

Additional Information

Date Listed	June 26th, 2025
Days on Market	8
Zoning	LA1

Listing Details

Listing Office	RE/MAX OF LLOYDMINSTER
----------------	------------------------

Data is supplied by Pillar 9â„¢ MLS® System. Pillar 9â„¢ is the owner of the copyright in its MLS® System. Data is deemed reliable but is not guaranteed accurate by Pillar 9â„¢. The trademarks MLS®, Multiple Listing Service® and the associated logos are owned by The Canadian Real Estate Association (CREA) and identify the quality of services provided by real estate professionals who are members of CREA. Used under license.