

# \$879,900 - 103 Wolf Creek Rise Se, Calgary

MLS® #A2235509

**\$879,900**

4 Bedroom, 4.00 Bathroom, 2,123 sqft  
Residential on 0.09 Acres

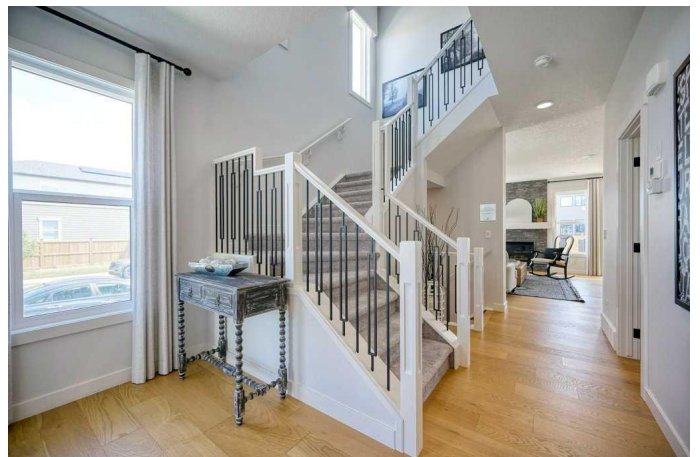
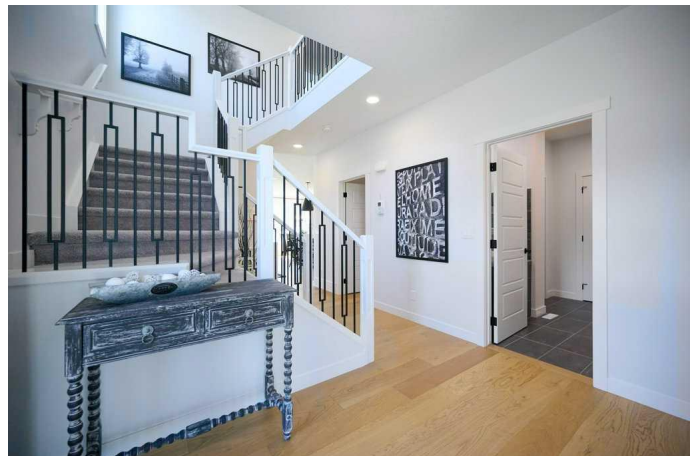
Wolf Willow, Calgary, Alberta

Harrington Showhome is AVAILABLE FOR RESALE. This stunning SHOWHOME IS LOCATED in ONE OF CALGARY'S BEST COMMUNITIES OF WOLF WILLOW. This Showhome features an open floor concept with 9'™ high ceilings and engineered hardwood flooring! Quartz and Stone countertops, NUMEROUS UPGRADES THAT YOU TYPICALLY ONLY FIND IN A SHOWHOME! Bordering Fish Creek Park, the Blue Devil Golf Course and the Bow River, Wolf Willow is an exciting new SE community that brings the lifestyle and beauty of the Bow River Valley to your doorstep. Connected by walking paths, parks and a future dedicated dog park, this community provides endless recreational opportunities with the convenience of urban amenities just minutes away and easy access to Macleod Trail and Stoney Trail. Buyer can take immediate possession and assume the leaseback or close after the showhome has been restored to a detached single family home for you to enjoy! PLEASE NOTE - THIS IS A RESALE PROPERTY.

Built in 2022

## Essential Information

MLS® #	A2235509
Price	\$879,900
Bedrooms	4



Bathrooms	4.00
Full Baths	3
Half Baths	1
Square Footage	2,123
Acres	0.09
Year Built	2022
Type	Residential
Sub-Type	Detached
Style	2 Storey
Status	Active

### **Community Information**

Address	103 Wolf Creek Rise Se
Subdivision	Wolf Willow
City	Calgary
County	Calgary
Province	Alberta
Postal Code	T2X4Z2

### **Amenities**

Parking Spaces	4
Parking	Double Garage Attached
# of Garages	2

### **Interior**

Interior Features	Double Vanity, Kitchen Island, No Animal Home, No Smoking Home, Open Floorplan, Pantry, Stone Counters
Appliances	Dishwasher, Electric Range, Microwave, Refrigerator, Washer/Dryer
Heating	Forced Air, Natural Gas
Cooling	Central Air
Has Basement	Yes
Basement	Finished, Full

### **Exterior**

Exterior Features	None
Lot Description	Back Yard, Corner Lot, Landscaped, Street Lighting, Level
Roof	Asphalt Shingle
Construction	Metal Frame, Stone, Vinyl Siding
Foundation	Poured Concrete

## **Additional Information**

Date Listed	June 27th, 2025
Days on Market	112
Zoning	R-G

## **Listing Details**

Listing Office	RE/MAX Complete Realty
----------------	------------------------

Data is supplied by Pillar 9â„¸ MLSÂ® System. Pillar 9â„¸ is the owner of the copyright in its MLSÂ® System. Data is deemed reliable but is not guaranteed accurate by Pillar 9â„¸. The trademarks MLSÂ®, Multiple Listing ServiceÂ® and the associated logos are owned by The Canadian Real Estate Association (CREA) and identify the quality of services provided by real estate professionals who are members of CREA. Used under license.