

\$39,900 - 724 23 Street N, Rural Lethbridge County

MLS® #A2236814

\$39,900

0 Bedroom, 0.00 Bathroom,
Commercial on 0.00 Acres

NONE, Rural Lethbridge County, Alberta

Turnkey Hair & Beauty Salon for Sale â€“

Prime Location with Low Overhead!

An exceptional opportunity to own a long-established hair salon in a high-exposure location with ample customer parking! This fully equipped and well-maintained business is ready for immediate operation â€“ just bring your vision and clientele.

Spanning over 1,200 sq ft, the space includes:

3 hair stations and 3 nail chairs

1 dedicated nail station, 1 hair wash sink

1 private wax/facial room

Lunch room, locker room, 1 washroom, and laundry area

The salon is in move-in condition, offering a clean and functional layout ideal for hairstyling, nails, esthetics, and more. Benefit from very low rent and operating costs, making this an excellent choice for both new entrepreneurs and experienced professionals looking to expand.

Flexible possession date allows for a smooth transition. Donâ€™t miss your chance to take over a trusted name in the beauty industry with loyal clientele and great growth potential.

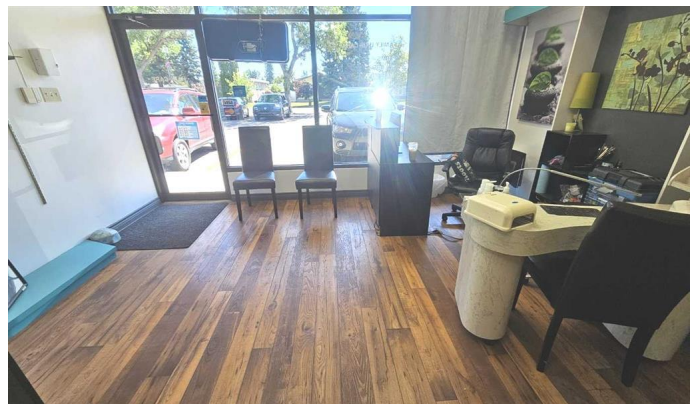
Built in 1964

Essential Information

MLS® # A2236814

Price \$39,900

Bathrooms 0.00



Acres	0.00
Year Built	1964
Type	Commercial
Sub-Type	Mixed Use
Status	Active

Community Information

Address	724 23 Street N
Subdivision	NONE
City	Rural Lethbridge County
County	Lethbridge County
Province	Alberta
Postal Code	T1H 3H7

Additional Information

Date Listed	July 3rd, 2025
Days on Market	38

Listing Details

Listing Office	CIR Realty
----------------	------------

Data is supplied by Pillar 9â„¢ MLSÂ® System. Pillar 9â„¢ is the owner of the copyright in its MLSÂ® System. Data is deemed reliable but is not guaranteed accurate by Pillar 9â„¢. The trademarks MLSÂ®, Multiple Listing ServiceÂ® and the associated logos are owned by The Canadian Real Estate Association (CREA) and identify the quality of services provided by real estate professionals who are members of CREA. Used under license.