

\$376,500 - 906 10 Avenue, Wainwright

MLS® #A2239062

\$376,500

4 Bedroom, 2.00 Bathroom, 1,064 sqft
Residential on 0.19 Acres

Wainwright, Wainwright, Alberta

Completely Rebuilt & Backing Wallace Park!

Originally built in 1966, this home was stripped down to the studs and fully rebuilt after a fire in 2022. Completed in September 2023, everything inside is brand new – from electrical and plumbing to finishings and design.

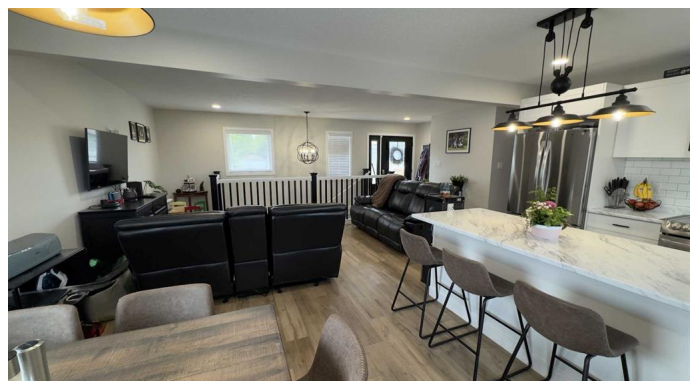
This beautifully redesigned home offers four bedrooms (three up, one down), an open-concept main floor, a four-piece bathroom upstairs, and a three-piece bathroom with laundry on the lower level. The basement features a large family room and an additional office, perfect for remote work or hobbies.

Enjoy the convenience of a double heated garage and the bonus of backing directly onto Wallace Park and playground. With schools just a short walk away, this home offers modern comfort in a fantastic family-friendly location. Move-in ready with nothing left to do but unpack and enjoy!

Built in 1966

Essential Information

MLS® #	A2239062
Price	\$376,500
Bedrooms	4



Bathrooms	2.00
Full Baths	2
Square Footage	1,064
Acres	0.19
Year Built	1966
Type	Residential
Sub-Type	Detached
Style	Bungalow
Status	Active

Community Information

Address	906 10 Avenue
Subdivision	Wainwright
City	Wainwright
County	Wainwright No. 61, M.D. of
Province	Alberta
Postal Code	T9W1B7

Amenities

Parking Spaces	6
Parking	Double Garage Attached, Driveway
# of Garages	2

Interior

Interior Features	Kitchen Island, No Animal Home, No Smoking Home, Open Floorplan
Appliances	Dishwasher, Freezer, Microwave Hood Fan, Refrigerator, Convection Oven
Heating	Floor Furnace, Forced Air, Natural Gas
Cooling	Central Air
Has Basement	Yes
Basement	Finished, Full

Exterior

Exterior Features	Fire Pit, Garden, Playground
Lot Description	Back Lane, Back Yard, Backs on to Park/Green Space, Few Trees, Front Yard, Lawn
Roof	Asphalt Shingle
Construction	Wood Frame
Foundation	Poured Concrete

Additional Information

Date Listed	July 16th, 2025
Days on Market	32
Zoning	R1

Listing Details

Listing Office ROYAL LEPAGE WRIGHT CHOICE REALTY

Data is supplied by Pillar 9â„¸ MLSÂ® System. Pillar 9â„¸ is the owner of the copyright in its MLSÂ® System. Data is deemed reliable but is not guaranteed accurate by Pillar 9â„¸. The trademarks MLSÂ®, Multiple Listing ServiceÂ® and the associated logos are owned by The Canadian Real Estate Association (CREA) and identify the quality of services provided by real estate professionals who are members of CREA. Used under license.