

\$899,900 - 25, 712028 Range Road 51, Rural Grande Prairie No. 1, County of

MLS® #A2244219

\$899,900

5 Bedroom, 4.00 Bathroom, 1,679 sqft
Residential on 4.45 Acres

Autumn Wood Estates., Rural Grande Prairie
No. 1, County of, Alberta

For Sale: Beautifully Treed 4.45 Acre Acreage
â€“ Just 7 Minutes from Grande Prairie!

Looking for the perfect blend of peaceful country living and modern convenience? This stunning, fully restored farmhouse sits on a beautifully treed 4.45-acre property and offers comfort, space, and income potential â€“ all just minutes from town.

Property Highlights:

Restored Farmhouse â€“ Rebuilt just 6 years ago, right down to the foundation and basement. Almost everything is new!

Beautiful Mature Trees â€“ A private, park-like setting with space to roam and relax.

Guesthouse (590 sq ft) â€“ Currently a successful Airbnb. Great for guests or added income.

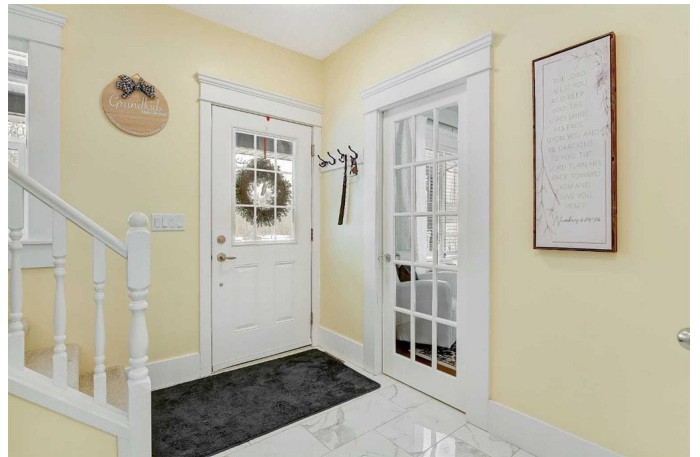
Detached Double Garage â€“ Room for vehicles and storage.

18x30 Pole Shed â€“ Extra space for equipment, toys, or workshop use.

Home Layout:

â€¢ Main Floor â€“ Master bedroom with walk-in closet and ensuite with laundry, spacious eat-in kitchen, formal dining room, cozy living room, and guest bathroom.

â€¢ Upstairs â€“ 3 bedrooms and full bathroom.



â€¢ Basement â€“ Huge bedroom, full bathroom, workout room, and a theatre or family room setup. Additional laundry area included.

Outdoor Living:

â€¢ Relax on the charming front veranda with your morning coffee

â€¢ Host family BBQs on the spacious back deck

â€¢ Enjoy private trails for quadding or snowmobiling â€“ year-round outdoor fun for the whole family!

Location:

Located only 7 minutes from Grande Prairie, this acreage offers the best of both worlds â€“ quiet, treed seclusion with quick access to all amenities.

Whether youâ€™re dreaming of a peaceful family home or a place with income potential, this property has it all.

?? Call now to book your private tour â€“ donâ€™t miss this rare opportunity!

Built in 2019

Essential Information

MLS® #	A2244219
Price	\$899,900
Bedrooms	5
Bathrooms	4.00
Full Baths	3
Half Baths	1
Square Footage	1,679
Acres	4.45
Year Built	2019

Type	Residential
Sub-Type	Detached
Style	2 Storey, Acreage with Residence
Status	Active

Community Information

Address	25, 712028 Range Road 51
Subdivision	Autumn Wood Estates.
City	Rural Grande Prairie No. 1, County of
County	Grande Prairie No. 1, County of
Province	Alberta
Postal Code	T8X 4A4

Amenities

Parking	Double Garage Detached, Additional Parking, See Remarks
# of Garages	2

Interior

Interior Features	Granite Counters, See Remarks
Appliances	Bar Fridge, Dishwasher, Refrigerator, Stove(s), Washer/Dryer, Window Coverings
Heating	Forced Air, Natural Gas, Boiler, Electric
Cooling	None
Has Basement	Yes
Basement	Finished, Full

Exterior

Exterior Features	BBQ gas line
Lot Description	No Neighbours Behind, Treed, Private
Roof	Metal
Construction	Vinyl Siding, Wood Frame, ICFs (Insulated Concrete Forms)
Foundation	ICF Block

Additional Information

Date Listed	August 1st, 2025
Days on Market	1
Zoning	CR-2

Listing Details

Listing Office	RE/MAX Grande Prairie
----------------	-----------------------

Data is supplied by Pillar 9â„¢ MLS® System. Pillar 9â„¢ is the owner of the copyright in its MLS® System. Data is deemed reliable but is not guaranteed accurate by Pillar 9â„¢. The trademarks MLS®, Multiple Listing Service® and the associated logos are owned by The Canadian Real Estate Association (CREA) and identify the quality of services provided by real estate professionals who are members of CREA. Used under license.