

# \$679,000 - 702 11 Street S, Lethbridge

MLS® #A2244686

**\$679,000**

6 Bedroom, 3.00 Bathroom, 3,612 sqft

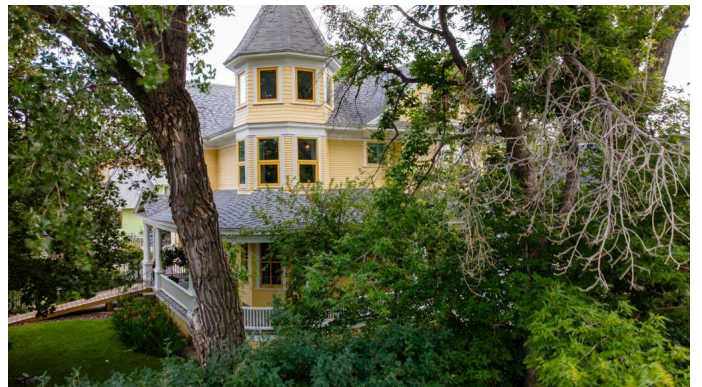
Residential on 0.21 Acres

London Road, Lethbridge, Alberta

Step into a timeless masterpiece. Presenting the E.B. Hill Residence—a designated heritage home and one of Lethbridge's most iconic architectural treasures. Built in 1910 by esteemed regional builder Alexander Smith, this extraordinary Queen Anne-style home is a rare and beautifully preserved piece of history that seamlessly marries turn of the century craftsmanship with modern sustainability.

This residence offers 2.5 storeys plus a full basement, providing exceptional space and versatility. Inside, you'll find six spacious bedrooms, three bathrooms, and a series of bright, thoughtfully designed gathering spaces that feel both grand and welcoming. The sun-soaked tower, accessed from the northeast corner, leads to a serene sunroom, while the wraparound veranda offers an ideal setting to enjoy the tranquil charm of this historic residential district.

This home is a true showcase of early 20th century artistry. Original tongue and-groove wood flooring graces the main level, complemented by rich wood trim around baseboards, doors, and windows. Many of the original lath and plaster walls and ceilings remain intact, preserving the home's authentic texture and atmosphere. Elegant pocket doors separate the dining and sitting rooms, and the fireplace, complete with a wood mantle, brick surround, and built in cabinetry—serves as a warm and inviting focal point.



Throughout the home, you'll find beautifully crafted wood staircases with original banisters, solid wood interior doors, and extant original lighting fixtures that speak to the era's meticulous detail. The cast iron radiators are still in place and fully functional, adding to the historic character. The front entry door, flanked by narrow stained glass windows and framed in wood, opens to a grand hallway featuring a wide, open entryway supported by classic wood pillars, creating a striking transition into the sitting room.

The basement offers generous storage, a functional laundry area, and an exciting opportunity to create additional living or hobby space. For those who value sustainability, the home has been tastefully updated with solar panels, blending heritage elegance with eco-conscious living.

Located in one of Lethbridge's most prestigious historic neighbourhoods, the E.B. Hill House is more than just a home, it's a living legacy. With unmatched architectural detail, rich local history, and timeless charm, this is a truly one of a kind property where craftsmanship, character, and history have been lovingly preserved.

Built in 1910

**Essential Information**

MLS® #	A2244686
Price	\$679,000
Bedrooms	6
Bathrooms	3.00
Full Baths	3
Square Footage	3,612
Acres	0.21
Year Built	1910
Type	Residential
Sub-Type	Detached

Style	2 and Half Storey
Status	Active

### Community Information

Address	702 11 Street S
Subdivision	London Road
City	Lethbridge
County	Lethbridge
Province	Alberta
Postal Code	T1J 2P4

### Amenities

Parking Spaces	4
Parking	Single Garage Detached
# of Garages	1

### Interior

Interior Features	Chandelier, Double Vanity, Kitchen Island, Natural Woodwork, Storage
Appliances	Built-In Oven, Refrigerator, Stove(s), Washer/Dryer, Window Coverings
Heating	Boiler
Cooling	None
Fireplace	Yes
# of Fireplaces	1
Fireplaces	Wood Burning
Has Basement	Yes
Basement	Finished, Full

### Exterior

Exterior Features	Balcony, Garden
Lot Description	Corner Lot
Roof	Shingle
Construction	Wood Siding
Foundation	Poured Concrete

### Additional Information

Date Listed	August 6th, 2025
Days on Market	2
Zoning	R-L

### Listing Details

Data is supplied by Pillar 9â„¸ MLSÂ® System. Pillar 9â„¸ is the owner of the copyright in its MLSÂ® System. Data is deemed reliable but is not guaranteed accurate by Pillar 9â„¸. The trademarks MLSÂ®, Multiple Listing ServiceÂ® and the associated logos are owned by The Canadian Real Estate Association (CREA) and identify the quality of services provided by real estate professionals who are members of CREA. Used under license.