

# \$205,400 - 109, 3910 23 Avenue S, Lethbridge

MLS® #A2244775

## \$205,400

2 Bedroom, 1.00 Bathroom, 828 sqft

Residential on 1.10 Acres

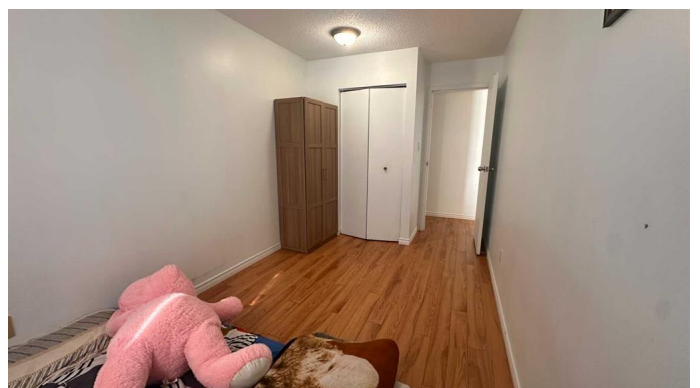
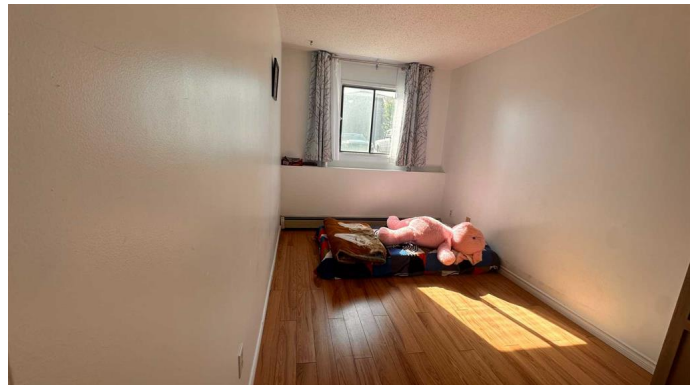
Redwood, Lethbridge, Alberta

Welcome to this quiet and highly sought-after neighborhood on the South side! Location! Location! This charming property is located within walking distance (5-10 minutes walk) to shopping areas, restaurants, grocery stores, bus stops & various local businesses. It's also just a few minutes' walk from Lethbridge Polytechnic, making it an ideal location for students or working professionals seeking convenience and accessibility. This lower unit offers direct access outside for those with mobility issues. Step outside and have a stroll with your furry friend on the long stretch of walkway/bike path at the back far & away from traffic. Online shopping deliveries or visitors waiting to be let in? No problem, visitors can call you via the intercom's touchscreen on the main entrance... you can see and/or talk to them from anywhere before granting access using the app on your phone. Whether you're looking for a place to call home (pet friendly and no age restriction) or an investment opportunity to rent out, the choice is endless!

Built in 1981

## Essential Information

MLS® #	A2244775
Price	\$205,400
Bedrooms	2
Bathrooms	1.00



Full Baths	1
Square Footage	828
Acres	1.10
Year Built	1981
Type	Residential
Sub-Type	Apartment
Style	Single Level Unit
Status	Active

### Community Information

Address	109, 3910 23 Avenue S
Subdivision	Redwood
City	Lethbridge
County	Lethbridge
Province	Alberta
Postal Code	T1K5H9

### Amenities

Amenities	Laundry, Parking, Snow Removal, Trash
Parking Spaces	1
Parking	Assigned, Off Street

### Interior

Interior Features	No Smoking Home, See Remarks, Storage
Appliances	Dishwasher, Electric Range, Microwave, Refrigerator
Heating	Boiler
Cooling	None
# of Stories	3

### Exterior

Exterior Features	Other
Construction	Mixed

### Additional Information

Date Listed	July 31st, 2025
Days on Market	2
Zoning	R-50

### Listing Details

Listing Office

Initia Real Estate

Data is supplied by Pillar 9â„¢ MLSÂ® System. Pillar 9â„¢ is the owner of the copyright in its MLSÂ® System. Data is deemed reliable but is not guaranteed accurate by Pillar 9â„¢. The trademarks MLSÂ®, Multiple Listing ServiceÂ® and the associated logos are owned by The Canadian Real Estate Association (CREA) and identify the quality of services provided by real estate professionals who are members of CREA. Used under license.