

# \$484,900 - 81 Perry Drive, Sylvan Lake

MLS® #A2244991

**\$484,900**

5 Bedroom, 3.00 Bathroom, 1,153 sqft

Residential on 0.14 Acres

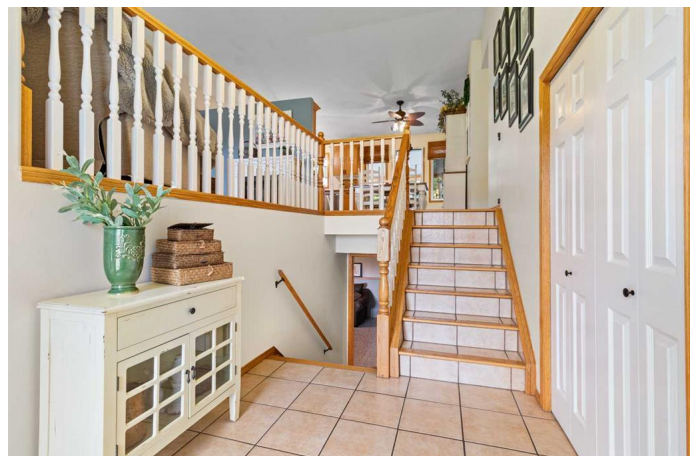
Pierview, Sylvan Lake, Alberta

Welcome to 81 Perry Drive—where style, comfort, and convenience blend seamlessly in one of Sylvan Lake's most sought-after neighborhoods. This beautifully maintained bi-level home offers five spacious bedrooms and three full bathrooms, providing plenty of room for families of all sizes.

Step inside to a bright, open main floor featuring gorgeous hardwood flooring that flows throughout the large living room, creating an airy and cohesive atmosphere. The kitchen is a true highlight, thoughtfully designed with a sink (with garburator) overlooking the private, treed backyard and deck. It boasts a full pantry and newer stainless steel appliance package, including a double oven (purchased within last 5 years). From the kitchen, garden doors open directly onto a covered deck—perfect for entertaining under the skylights of covered deck or simply relaxing in your fully fenced, private yard.

Upstairs, you'll find three comfortable bedrooms, including a spacious primary suite with its own ensuite bath & built-in closet system. The lower level is ideal for entertaining or movie night with the kids in large family room., offering large, bright windows, an open layout, two additional generously sized bedrooms, a full bathroom, and a laundry room fit for royalty.

Location is everything, and 81 Perry Drive



delivers. Situated directly across from the elementary school, youâ€™ll enjoy the convenience of watching the kids walk to school no drop off lines, just peace of mind, easy access to wide open park spaces. Plus, youâ€™re just a quick 10-minute bike ride from Sylvan Lakeâ€™s beautiful shoreline, renowned for its clean water, sandy beaches, and recreational opportunities.

Save on Big-ticket upgrades: new shingles in 2025, a new front door, a hot water tank and furnace replaced within the last five years. The home also features the added bonus of RV parking.

This is more than just a houseâ€”itâ€™s a place to call home, offering all the features and location perks youâ€™ve been looking for.

Built in 1995

**Essential Information**

MLS® #	A2244991
Price	\$484,900
Bedrooms	5
Bathrooms	3.00
Full Baths	3
Square Footage	1,153
Acres	0.14
Year Built	1995
Type	Residential
Sub-Type	Detached
Style	Bi-Level
Status	Active

**Community Information**

Address	81 Perry Drive
Subdivision	Pierview
City	Sylvan Lake

County	Red Deer County
Province	Alberta
Postal Code	t4s 1k3

### Amenities

Parking Spaces	4
Parking	Double Garage Attached
# of Garages	2

### Interior

Interior Features	Central Vacuum, High Ceilings, Pantry, Vaulted Ceiling(s), Vinyl Windows
Appliances	Dishwasher, Electric Stove, Refrigerator, Washer/Dryer
Heating	Forced Air
Cooling	None
Fireplace	Yes
# of Fireplaces	1
Fireplaces	Wood Burning Stove, Basement
Has Basement	Yes
Basement	Finished, Full

### Exterior

Exterior Features	Fire Pit, Private Yard
Lot Description	Landscaped, Many Trees, See Remarks
Roof	Asphalt
Construction	Mixed, Vinyl Siding, Wood Frame
Foundation	Poured Concrete

### Additional Information

Date Listed	August 1st, 2025
Days on Market	1
Zoning	R1

### Listing Details

Listing Office	Royal LePage Network Realty Corp.
----------------	-----------------------------------

Data is supplied by Pillar 9â„¢ MLS® System. Pillar 9â„¢ is the owner of the copyright in its MLS® System. Data is deemed reliable but is not guaranteed accurate by Pillar 9â„¢. The trademarks MLS®, Multiple Listing Service® and the associated logos are owned by The Canadian Real Estate Association (CREA) and identify the quality of services provided by real estate professionals who are members of CREA. Used under license.