

\$170,000 - #5 Ovich Lane, Rural Athabasca County

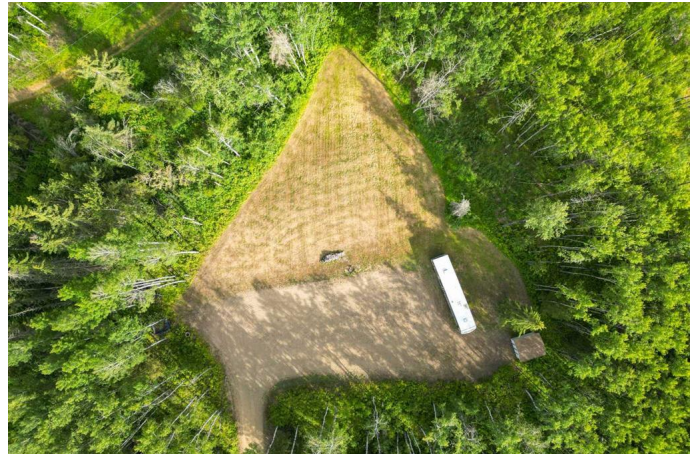
MLS® #A2245038

\$170,000

0 Bedroom, 0.00 Bathroom,
Land on 6.80 Acres

Skeleton Lake, Rural Athabasca County,
Alberta

Located in one of Skeleton Lake's newer subdivisions, this 6.8-acre lot (approx only 1.5 acres cleared) in Skeleton Lake Estates offers a peaceful, treed setting just a short distance from the lake. Surrounded by nature and backing onto crown land on the north side, this property provides added privacy and space to roam. A cleared area is already set up for your trailer, and includes a garden shed and a Side-by-Side for exploring the area. ***For those looking for a ready-to-enjoy setup, there's also the option to purchase a lightly used 2017 Chaparral 390 QSMB fifth-wheel camper—42 feet long and in excellent condition—for an additional \$40,000*** Whether you're seeking a quiet retreat, a recreational base, or the perfect start to your lake lifestyle, this property delivers nature, space, and flexibility in one beautiful package. Located 1.5 hrs from Edmonton, 2.5 hrs from Fort McMurray and only 15 min from Boyle.



Essential Information

| | |
|-----------|------------------|
| MLS® # | A2245038 |
| Price | \$170,000 |
| Bathrooms | 0.00 |
| Acres | 6.80 |
| Type | Land |
| Sub-Type | Residential Land |

| | |
|--------|--------|
| Status | Active |
|--------|--------|

Community Information

| | |
|-------------|------------------------|
| Address | #5 Ovich Lane |
| Subdivision | Skeleton Lake |
| City | Rural Athabasca County |
| County | Athabasca County |
| Province | Alberta |
| Postal Code | T0A0M0 |

Additional Information

| | |
|----------------|------------------|
| Date Listed | August 1st, 2025 |
| Days on Market | 1 |
| Zoning | RES |

Listing Details

| | |
|----------------|----------------|
| Listing Office | RE/MAX Connect |
|----------------|----------------|

Data is supplied by Pillar 9â„¢ MLS® System. Pillar 9â„¢ is the owner of the copyright in its MLS® System. Data is deemed reliable but is not guaranteed accurate by Pillar 9â„¢. The trademarks MLS®, Multiple Listing Service® and the associated logos are owned by The Canadian Real Estate Association (CREA) and identify the quality of services provided by real estate professionals who are members of CREA. Used under license.