

# \$349,900 - 6 Stonegate Crescent Se, Medicine Hat

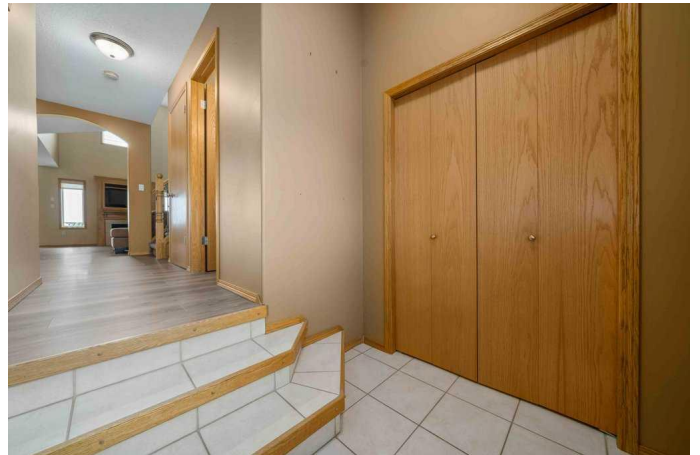
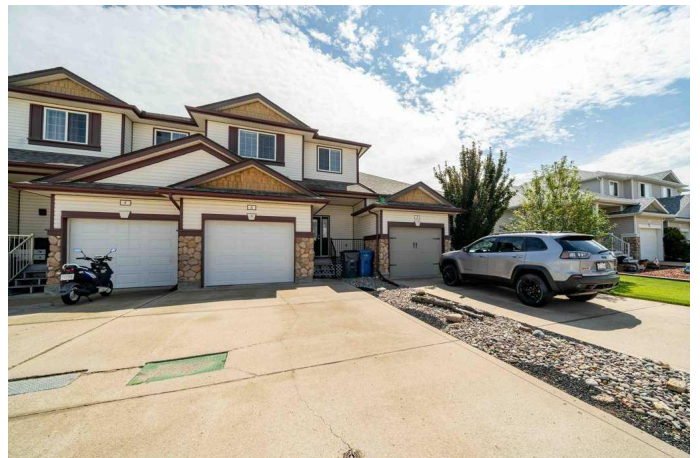
MLS® #A2246222

**\$349,900**

3 Bedroom, 3.00 Bathroom, 1,533 sqft  
Residential on 0.05 Acres

SE Southridge, Medicine Hat, Alberta

Welcome to 6 Stonegate Crescent SE, a beautifully maintained two-storey home perfectly situated on a quiet crescent with no rear neighbours, backing onto serene green space. This bright and spacious residence offers 3 bedrooms and 3 bathrooms, including a convenient cheater door off the master bedroom to the upstairs bathroom. Step inside to discover high ceilings and a thoughtfully designed layout, featuring a functional kitchen with island, pantry, and a full appliance package—including new appliances installed in 2018. The main floor living room invites you to relax by the cozy fireplace, while the dedicated built-in office upstairs provides a quiet workspace. Enjoy the spacious basement family room complete with a dry bar—perfect for entertaining guests or unwinding after a long day. Both front and rear decks offer peaceful spots to savor your morning coffee or evening glass of wine. This low-maintenance property boasts a fenced rear yard, ideal for privacy and outdoor enjoyment, with easy access to walking trails, schools, playgrounds, and the YMCA—all just steps away. Additional updates include a new garage door (2023), shingles (2018), new vinyl plank and carpet flooring (2022), a new water heater (2025), and a washing machine (2023). Practical features such as central air conditioning, central vacuum, laundry room off the garage, and a single attached garage with direct home entry add convenience to



everyday living. With no condo fees and easy access to shopping and amenities, this home is move-in ready and waiting for you to enjoy!

Built in 1999

### Essential Information

MLS® #	A2246222
Price	\$349,900
Bedrooms	3
Bathrooms	3.00
Full Baths	2
Half Baths	1
Square Footage	1,533
Acres	0.05
Year Built	1999
Type	Residential
Sub-Type	Row/Townhouse
Style	2 Storey
Status	Active

### Community Information

Address	6 Stonegate Crescent Se
Subdivision	SE Southridge
City	Medicine Hat
County	Medicine Hat
Province	Alberta
Postal Code	T1B 4L3

### Amenities

Parking Spaces	2
Parking	Concrete Driveway, Garage Door Opener, Single Garage Attached
# of Garages	1

### Interior

Interior Features	Built-in Features, Central Vacuum, High Ceilings, Kitchen Island, No Animal Home, No Smoking Home, Pantry, Dry Bar
Appliances	Central Air Conditioner, Dishwasher, Dryer, Garage Control(s), Range Hood, Refrigerator, Stove(s), Washer, Window Coverings

Heating	Forced Air, Natural Gas
Cooling	Central Air
Fireplace	Yes
# of Fireplaces	1
Fireplaces	Gas, Living Room
Has Basement	Yes
Basement	Finished, Full

## Exterior

Exterior Features	BBQ gas line
Lot Description	Back Yard, Backs on to Park/Green Space, Landscaped, No Neighbours Behind
Roof	Asphalt Shingle
Construction	Stone, Vinyl Siding
Foundation	Poured Concrete

## Additional Information

Date Listed	August 6th, 2025
Days on Market	2
Zoning	R-MD

## Listing Details

Listing Office	RIVER STREET REAL ESTATE
----------------	--------------------------

Data is supplied by Pillar 9â„¢ MLS® System. Pillar 9â„¢ is the owner of the copyright in its MLS® System. Data is deemed reliable but is not guaranteed accurate by Pillar 9â„¢. The trademarks MLS®, Multiple Listing Service® and the associated logos are owned by The Canadian Real Estate Association (CREA) and identify the quality of services provided by real estate professionals who are members of CREA. Used under license.