

\$1,670,000 - 1121 Lawrence Grassi Ridge, Canmore

MLS® #A2247261

\$1,670,000

4 Bedroom, 4.00 Bathroom, 1,886 sqft

Residential on 0.07 Acres

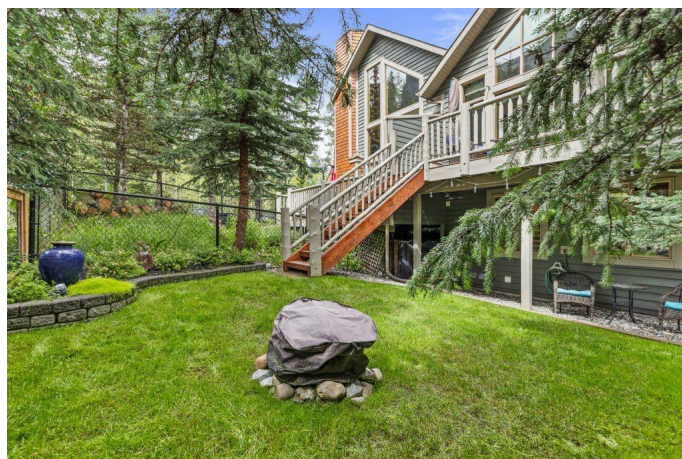
Quarry Pines, Canmore, Alberta

Steps from Quarry Lake, High Line Trails & Dog Park! This 4-bedroom, 3.5-bath mountain home offers vaulted open-concept living with stunning mountain views. The main level features gleaming hardwood floors, a real wood-burning fireplace, and floor-to-ceiling windows that flood the space with natural light. The chef's kitchen flows seamlessly into the dining and living areas, while a large deck "surrounded by trees" invites you to relax outdoors. The master suite on the main floor includes a walk-in closet, 5-piece ensuite and a private deck. Downstairs, enjoy cork flooring, in-floor heating and a second family room. A double garage, abundant storage, and a fenced yard make this home practical as well as beautiful. Located in a quiet neighborhood perfect for evening strolls, with multiple playgrounds nearby. Steps to Quarry Lake, High Line trails, and the dog park "this is mountain living at its finest!

Built in 2004

Essential Information

MLS® #	A2247261
Price	\$1,670,000
Bedrooms	4
Bathrooms	4.00
Full Baths	3
Half Baths	1
Square Footage	1,886



Acres	0.07
Year Built	2004
Type	Residential
Sub-Type	Semi Detached
Style	2 Storey, Side by Side
Status	Active

Community Information

Address	1121 Lawrence Grassi Ridge
Subdivision	Quarry Pines
City	Canmore
County	Bighorn No. 8, M.D. of
Province	Alberta
Postal Code	T1W 3C3

Amenities

Parking Spaces	4
Parking	Additional Parking, Double Garage Attached
# of Garages	2

Interior

Interior Features	Closet Organizers, Granite Counters, High Ceilings, Kitchen Island
Appliances	Dishwasher, Dryer, Garburator, Microwave, Microwave Hood Fan, Refrigerator, Washer, Window Coverings, Gas Oven
Heating	In Floor, Forced Air
Cooling	None
Fireplace	Yes
# of Fireplaces	1
Fireplaces	Wood Burning
Has Basement	Yes
Basement	Finished, Full

Exterior

Exterior Features	Balcony, Lighting
Lot Description	Landscaped
Roof	Asphalt
Construction	Concrete, Wood Frame
Foundation	Poured Concrete

Additional Information

Date Listed August 21st, 2025

Days on Market 2

Zoning 12

Listing Details

Listing Office RE/MAX Alpine Realty

Data is supplied by Pillar 9â„¢ MLSÂ® System. Pillar 9â„¢ is the owner of the copyright in its MLSÂ® System. Data is deemed reliable but is not guaranteed accurate by Pillar 9â„¢. The trademarks MLSÂ®, Multiple Listing ServiceÂ® and the associated logos are owned by The Canadian Real Estate Association (CREA) and identify the quality of services provided by real estate professionals who are members of CREA. Used under license.