

\$949,000 - Se 8 15 24 W4, Champion

MLS® #A2268071

\$949,000

0 Bedroom, 0.00 Bathroom,
Land on 160.00 Acres

NONE, Champion, Alberta

Thinking about next year? Take a look at 157 acres of cultivated land and 3 acres of pasture land to either expand or start your operation in Vulcan County. The cultivated land was wheat in 2025 and lentils in 2024. Water rights could be applied for on this quarter. Road access to the quarter from Range Road 244.

Essential Information

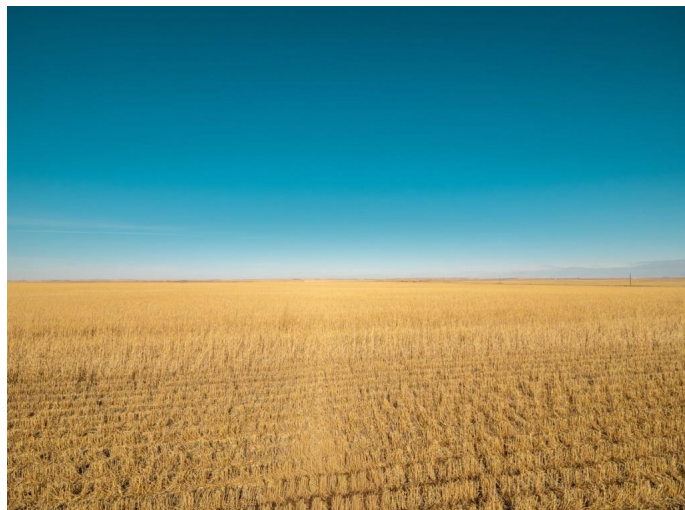
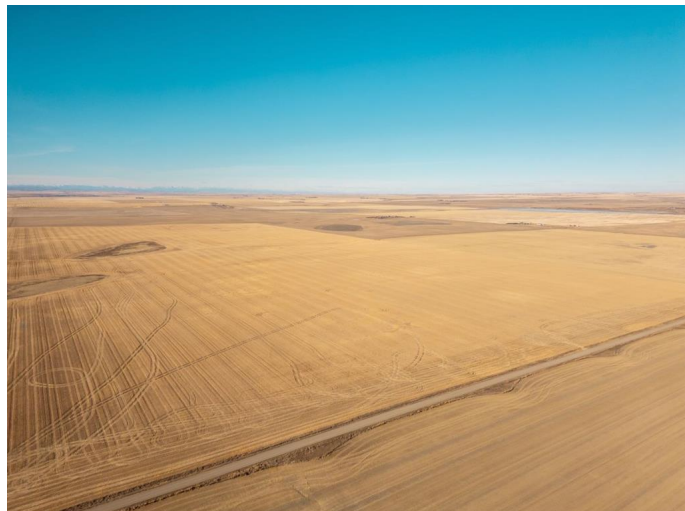
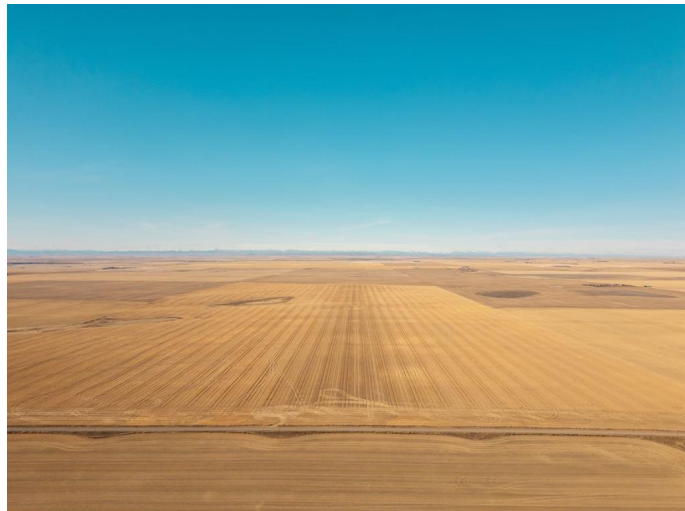
MLS® #	A2268071
Price	\$949,000
Bathrooms	0.00
Acres	160.00
Type	Land
Sub-Type	Commercial Land
Status	Active

Community Information

Address	Se 8 15 24 W4
Subdivision	NONE
City	Champion
County	Vulcan County
Province	Alberta
Postal Code	T0L 0B4

Additional Information

Date Listed	October 31st, 2025
Days on Market	2
Zoning	Rural General



Listing Details

Listing Office CIR Realty

Data is supplied by Pillar 9â,,ç MLSÂ® System. Pillar 9â,,ç is the owner of the copyright in its MLSÂ® System. Data is deemed reliable but is not guaranteed accurate by Pillar 9â,,ç. The trademarks MLSÂ®, Multiple Listing ServiceÂ® and the associated logos are owned by The Canadian Real Estate Association (CREA) and identify the quality of services provided by real estate professionals who are members of CREA. Used under license.